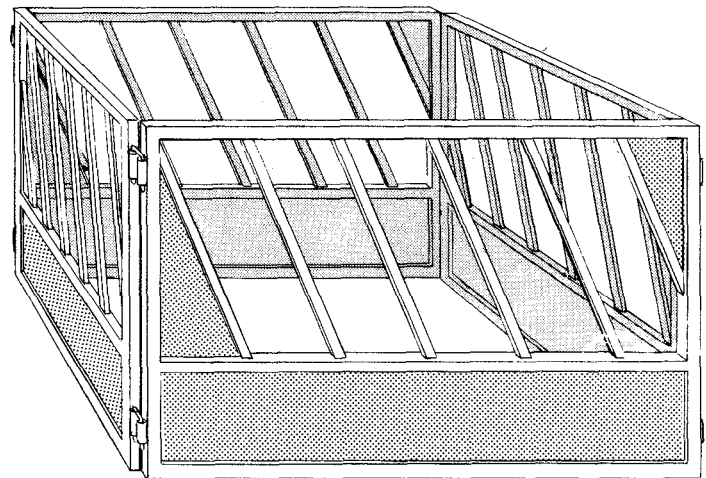
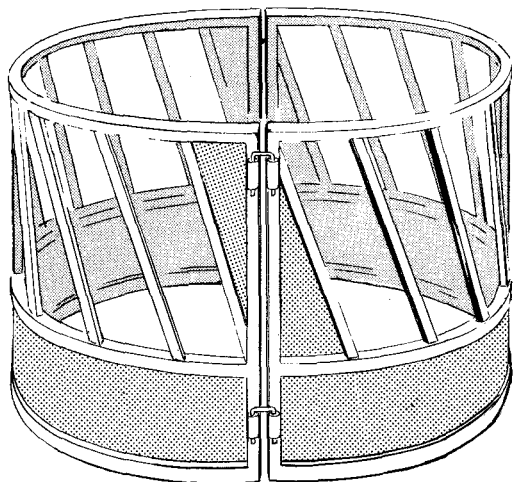


GIANT BALE FEEDERS (STEEL)

COMPLETE INSTRUCTIONS



The Canada Plan Service prepares detailed plans showing how to construct modern farm buildings, livestock housing systems, storages and equipment for Canadian Agriculture.

This leaflet gives the details for a farm building component or piece of farmstead equipment. To obtain another copy of this leaflet, contact your local provincial agricultural engineer or extension advisor.

GIANT BALE FEEDERS (STEEL)

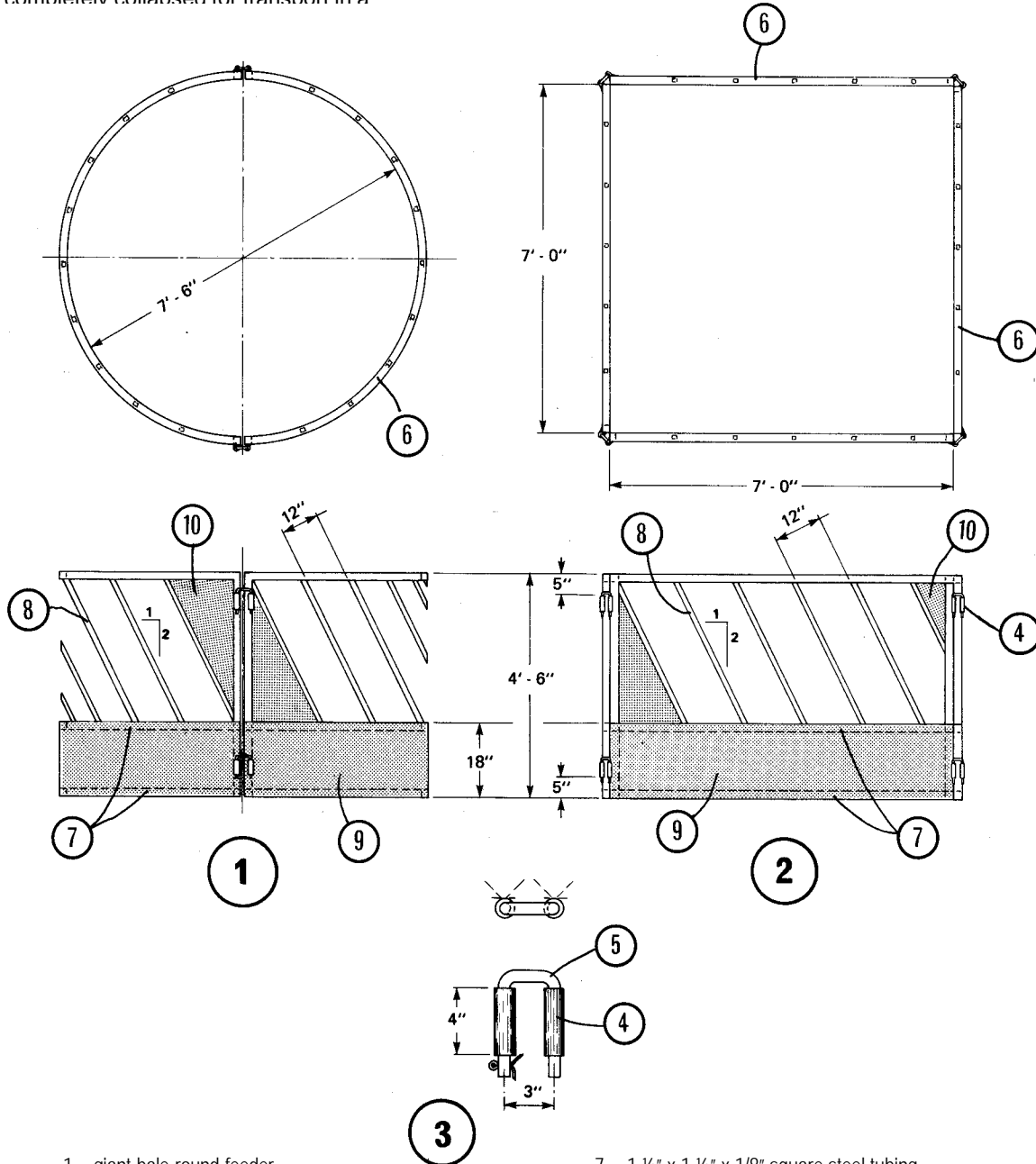
PLAN 1642 NEW 85:03

These big bale feed racks are easy to load, easy to move, and they prevent excessive hay wastage. The round version requires a bender to reform the square tube rails, but the round shape makes it easier to upend the unit and roll it from place to place.

The square version is easier to build in the farm shop, and it can be completely collapsed for transport in a pickup truck.

Important feed-saving features are the solid lower section and the slanted divider bars above. Spacing these bars 12 in. apart is a good compromise for all ages of cattle.

With slanted bars, cattle must lift and turn their heads a little sideways to withdraw. This makes it a little more difficult to pull hay out of the feeder, reducing waste. Triangular openings at the ends of each panel should be closed with sheet steel; otherwise cattle can occasionally get wedged in these tapered opening.



- 1 giant bale round feeder
- 2 giant bale square feeder
- 3 locking pin assembly
- 4 3/4" pipe welded both sides to frame
- 5 3/4" steel rod, bend as shown and drill end for cotter pin
- 6 2" x 2" x 1/8" square steel tubing, framing

- 7 1 1/2" x 1 1/2" x 1/8" square steel tubing, framing
- 8 1" x 1" x 1/8" square bars
- 9 16 ga sheet steel welded or bolted to frame
- 10 fill triangular corners to prevent cattle from being caught