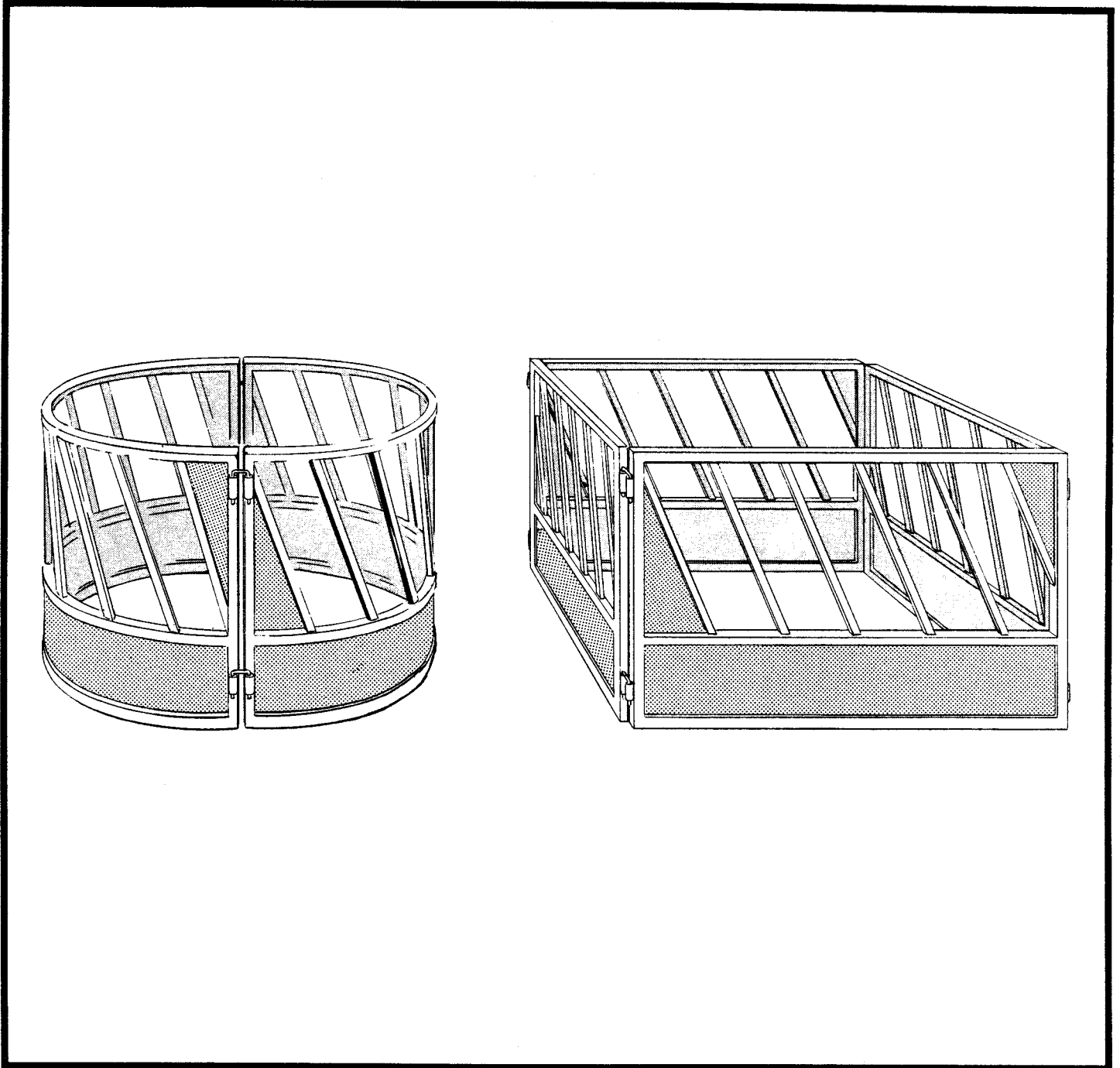


GIANT BALE FEEDERS (STEEL)



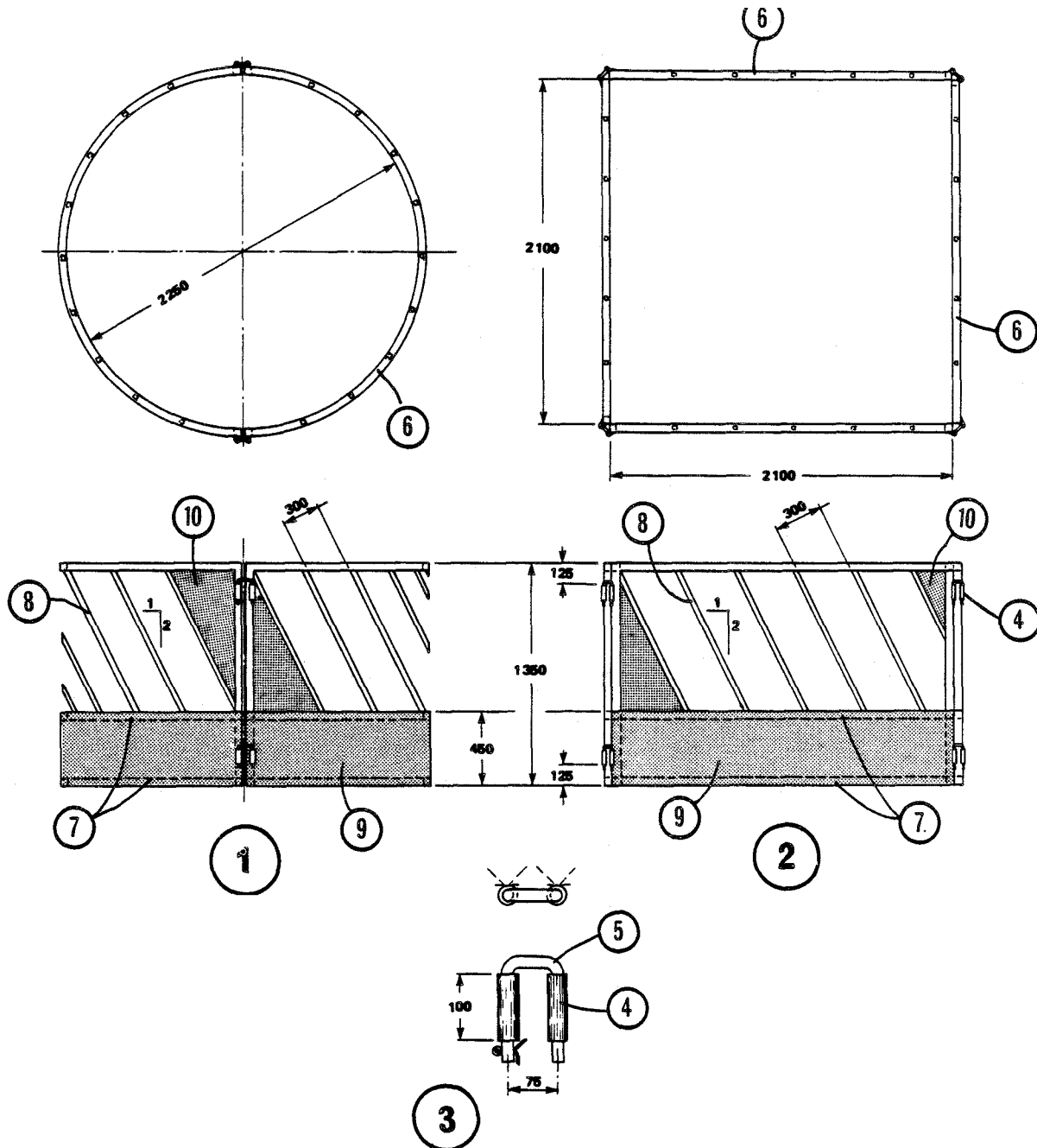
GIANT BALE FEEDERS (STEEL)

PLAN M-1642 NEW: 80:7

These big bale feed racks are easy to load, easy to move, and they prevent excessive hay wastage. The round version requires a bender to reform the square tube rails, but the round shape makes it easier to up-end the unit and roll it from place to place. The square version is easier to build in the farm shop, and it can be completely collapsed for transport in a pickup truck.

Important feed-saving features are the solid lower section and the slanted divider bars above. Spacing these bars 300 mm apart is a good compromise for all ages of cattle.

With slanted bars, cattle must lift and turn their heads a little sideways to withdraw. This makes it a little more difficult to pull hay out of the feeder, reducing waste. Triangular openings at the ends of each panel should be closed with sheet steel; otherwise cattle can occasionally get wedged in these tapered opening.



1. giant bale round feeder
2. giant bale square feeder
3. locking pin ass'y
4. 3/4" pipe welded both sides to frame

5. 20 mm steel rod, bend as shown and drill end for cotter pin

6. 2" x 2" x 1/8" square steel tubing, framing

7. 1 1/2" x 1 1/2" x 1/8" square steel tubing, framing

8. 1" x 1" x 1/8" square tubing, angled divider bars

9. 1.6 mm sheet steel welded or bolted to frame

10. fill triangular corners to prevent cattle from being caught