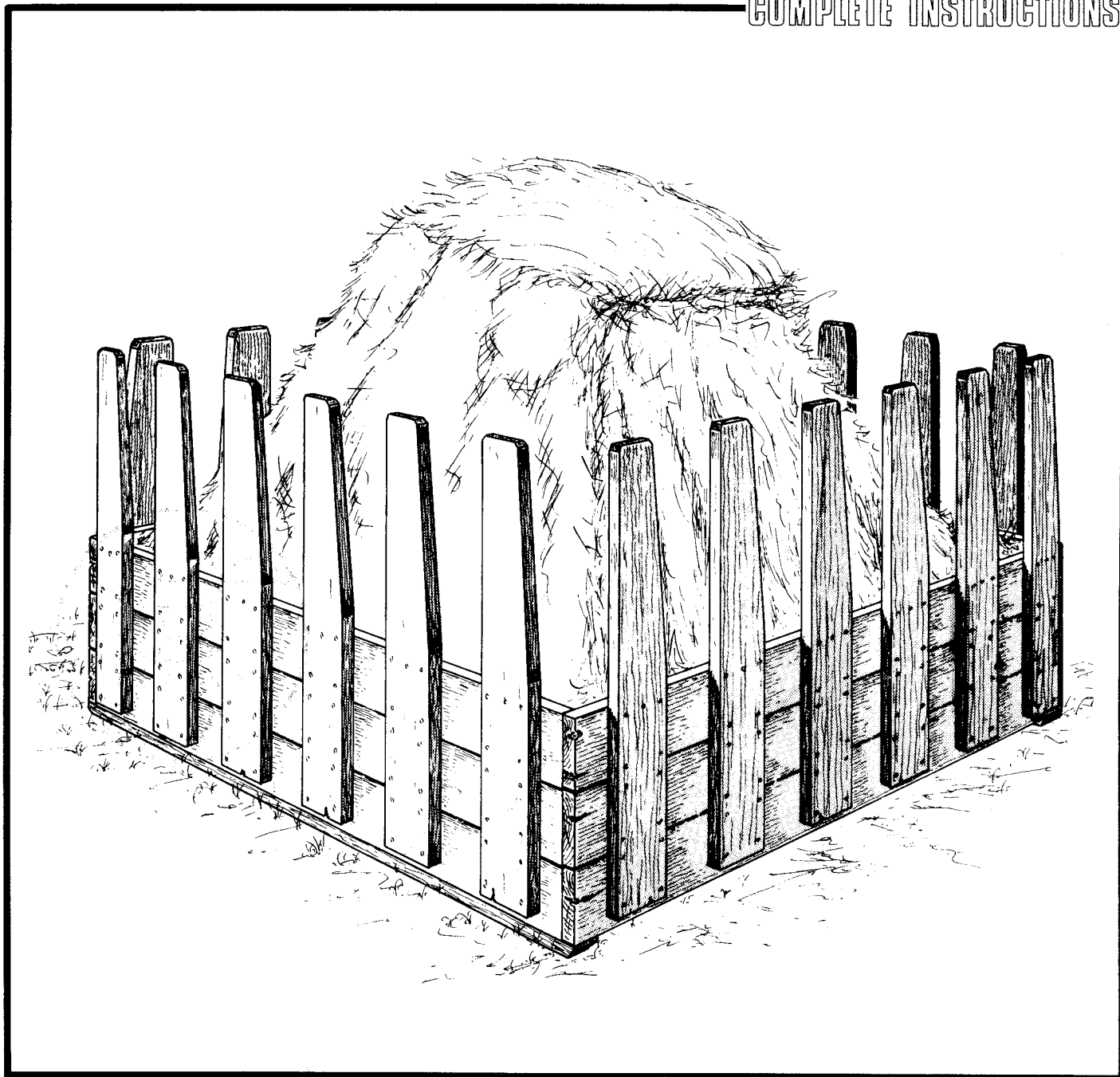


PLAN
1643

GIANT BALE FEEDER

COMPLETE INSTRUCTIONS



The Canada Plan Service prepares detailed plans showing how to construct modern farm buildings, livestock housing systems, storages and equipment for Canadian Agriculture.

This leaflet gives the details for a farm building component or piece of farmstead equipment. To obtain another copy of this leaflet, contact your local provincial agricultural engineer or extension advisor.

GIANT BALE FEEDER

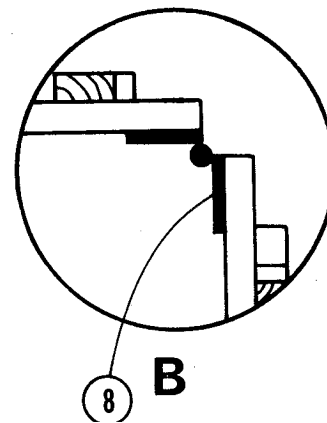
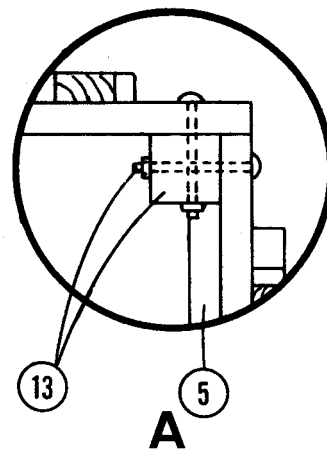
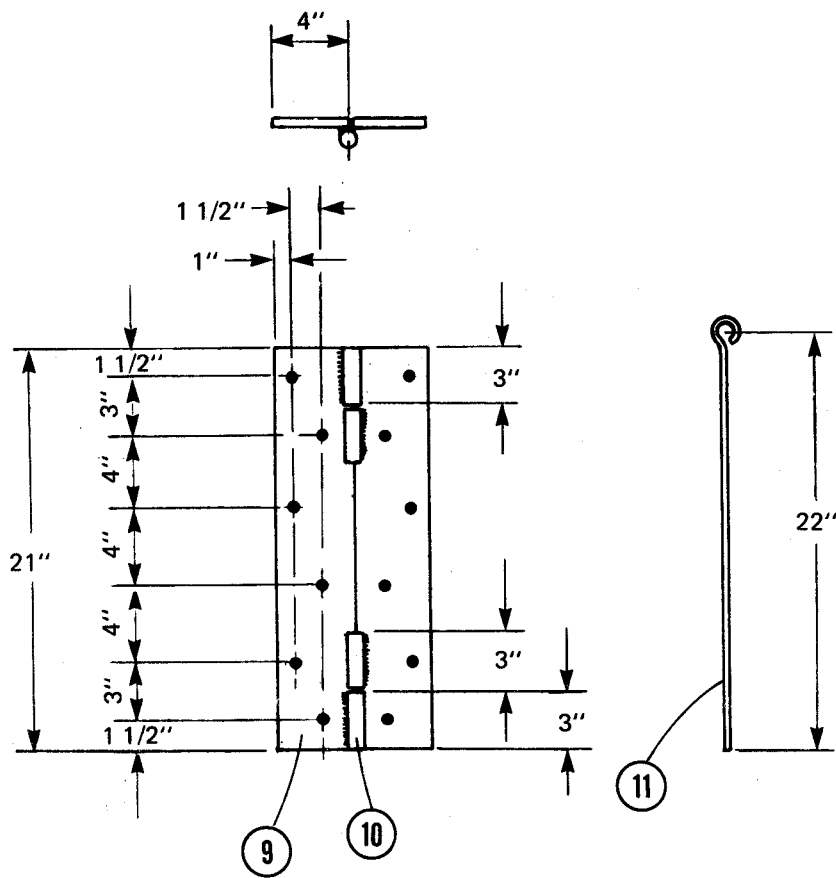
PLAN 1643 NEW 85:03

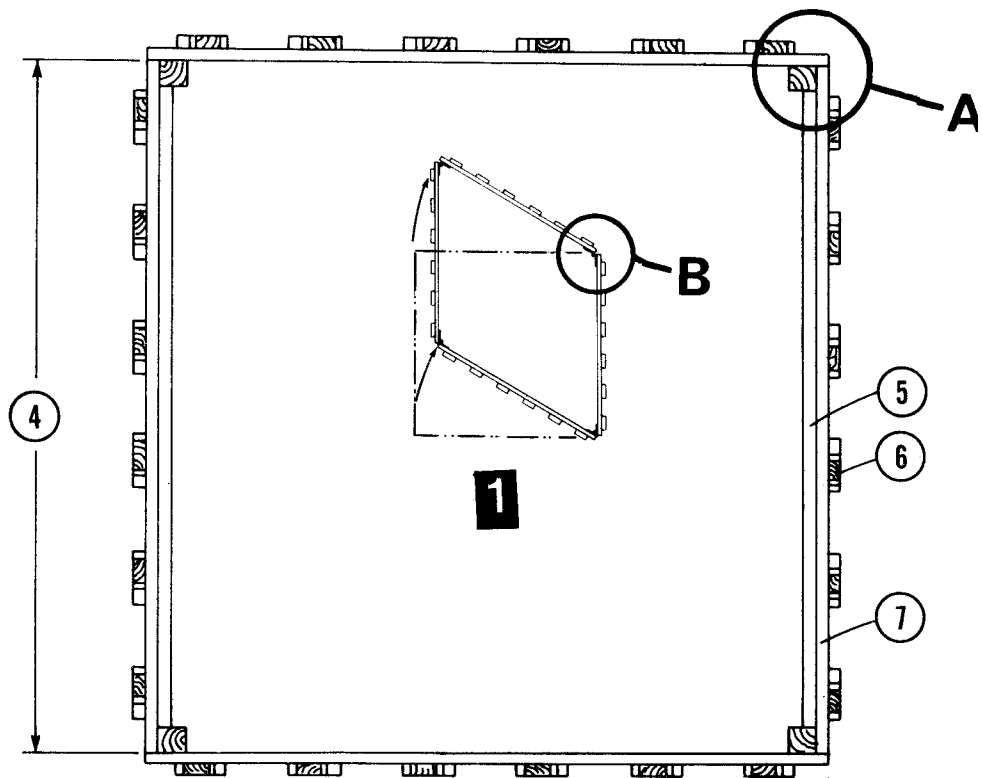
The plan gives details for making a simple feed fence enclosure for self-feeding giant hay bales to cattle. To hold the largest round hay bales, build the 8x 8ft size for a single bale, or the 8 x 16 ft size for two bales.

This feeder is an adaptation of the tombstone feed fence principle, a proven feed saver for both dairy and beef cattle feeding.

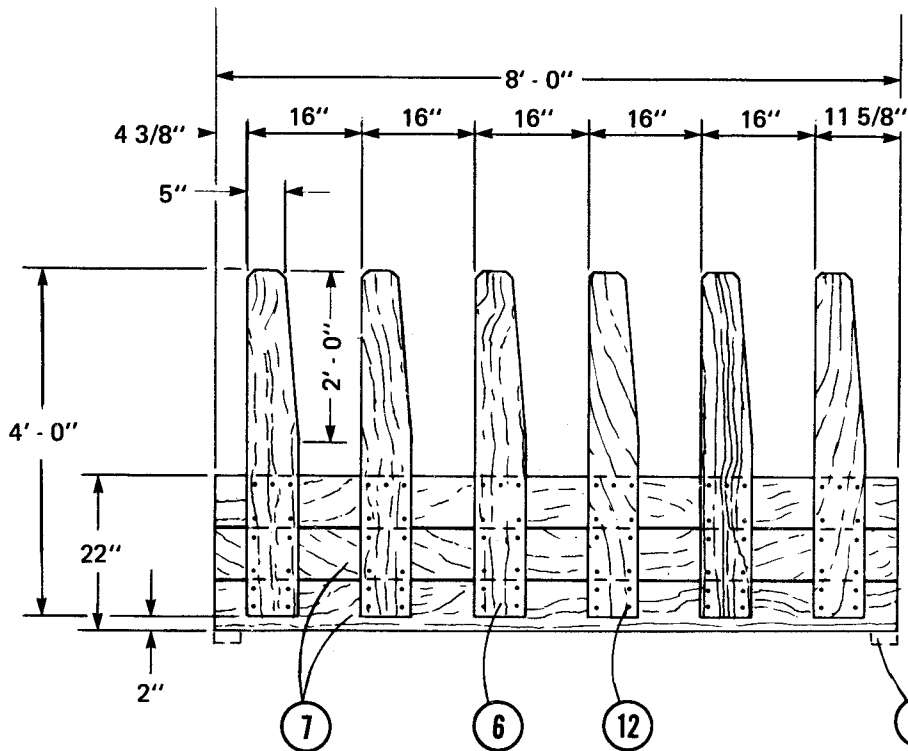
Cattle are hard on feeding equipment. The tapered vertical dividers, in particular, should be reasonably free of knots, splits and other large defects. Connections must be strongly made with clinched nails or bolts. Corner connections may be bolted permanently, so that the feeder can be moved by skidding, or lifting with a tractor loader. Alternatively, the four corners may be hinged for folding or dismantling. The hinged model may be fitted with bottom crosspieces supporting removable plywood floor panels. This raised floor helps keep hay off the wet ground, for feedlots in high rainfall areas.

1. giant bale feeder with hinged corners, feeder folds partway for a partly used bale, or flat for transport
2. giant bale feeder with fixed corners
3. end panel
4. side panel, make 8'-0" for one bale, make 16'-0" for two bales
5. 2" x 4" skids, (fixed type only, ends bevelled)
6. 2" x 8" x 4'-0" uprights, avoid knots near top of horizontal planking
7. 3 - 2" x 8" on feed side
8. corner hinge
9. 1/4" steel strap, drill 6 holes for 3/8" x 2-5/8" machine bolts
10. 3/4" pipe, weld to 9
11. 5/8" diam hinge pin
12. 4" spiral nails, clinched
13. 4" x 4" x 22" corner posts, 6 bolts each post





2



3