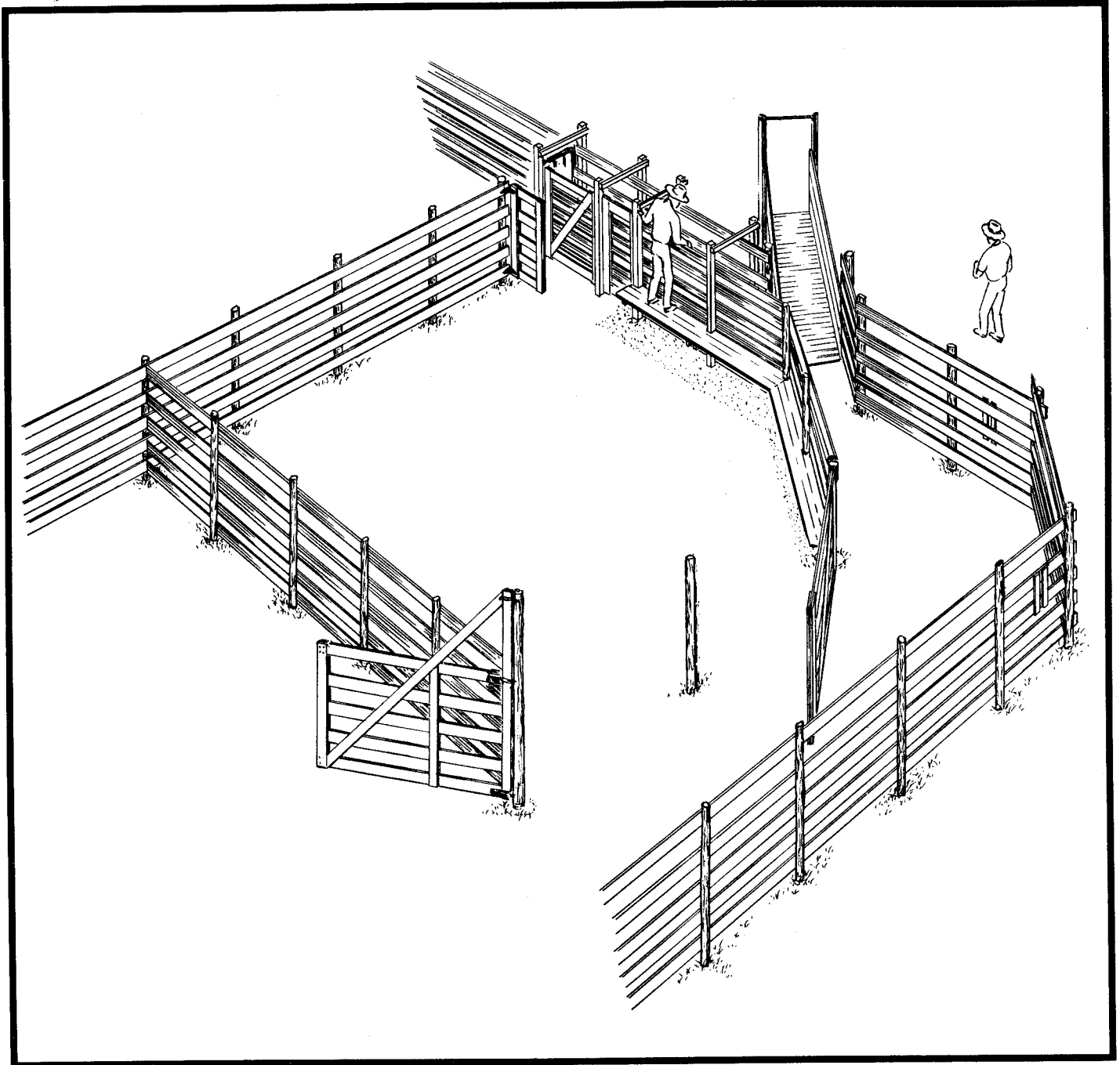




## MINIMUM WORKING CORRAL



The Canada Plan Service prepares detailed plans showing how to construct modern farm buildings, livestock housing systems, storages and equipment for Canadian Agriculture.

This leaflet gives the details for a farm building component or piece of farmstead equipment. To obtain another copy of this leaflet, contact your local provincial agricultural engineer or extension advisor.

## MINIMUM WORKING CORRAL

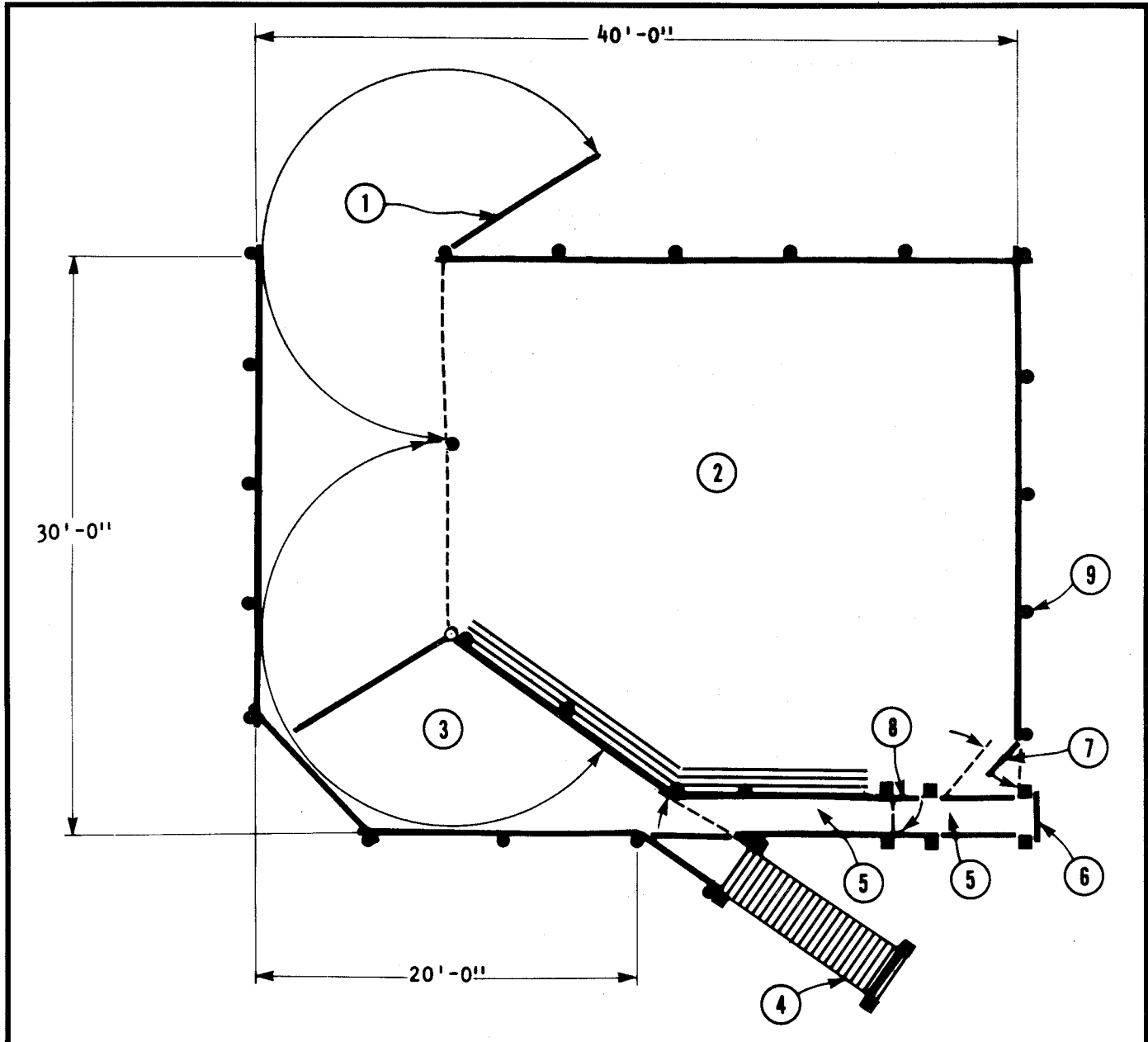
NEW 1:75

This is a minimum handling facility for the cattleman with a few head who handles cattle infrequently during a year, or for a separate pasture facility remote from the central facilities of a cow-calf operation. It consists of a holding pen, crowding area, and small working chute.

A semi-circular crowding pen with a crowding gate (leaflet

1812) helps squeeze animals into the chute with minimum effort. The same crowding unit can move animals into a loading chute located adjacent to the working chute (leaflet 1813). See leaflet 1811 for other fencing and gate details.

This corral has a short working chute (longer is preferred). It may be further equipped with a home-made headgate or a commercial squeeze with attached headgate. As the herd or the operator's needs increase this layout can be readily expanded.



- |  |   |
|--|---|
| 1. 10'-0" gate (leaflet 1811)  | 6. pipeframe headgate, or commercial headgate |
| 2. holding pen   | 7. access gate                                |
| 3. crowding pen with crowding gate (leaflet 1812)                              | 8. optional man gate, same width as chute     |
| 4. loading chute (leaflet 1816)  | 9. posts 6' -0" o.c.                          |
| 5. working chute (leaflet 1813) including cattle squeeze or commercial squeeze |   |