

- 1 for management information see leaflet M-2512
- 2 include truss plan to suit local snow load, modified for extra snow from adjacent barn roof (see supplement no. 4 to the National Building Code of Canada), modify truss for overhang as per sheet 3
- 3 ALL DIMENSIONS IN THIS METRIC PLAN ARE IN MILLIMETRES (mm) UNLESS OTHERWISE SPECIFIED

**LIST OF DRAWINGS**

sheet no.	title
1	MILKHOUSE – OUTSIDE VESTIBULE
2	FLOOR PLAN & ELECTRICAL LAYOUT
3	WALL SECTION & CONSTRUCTION DETAILS

**WARNING**

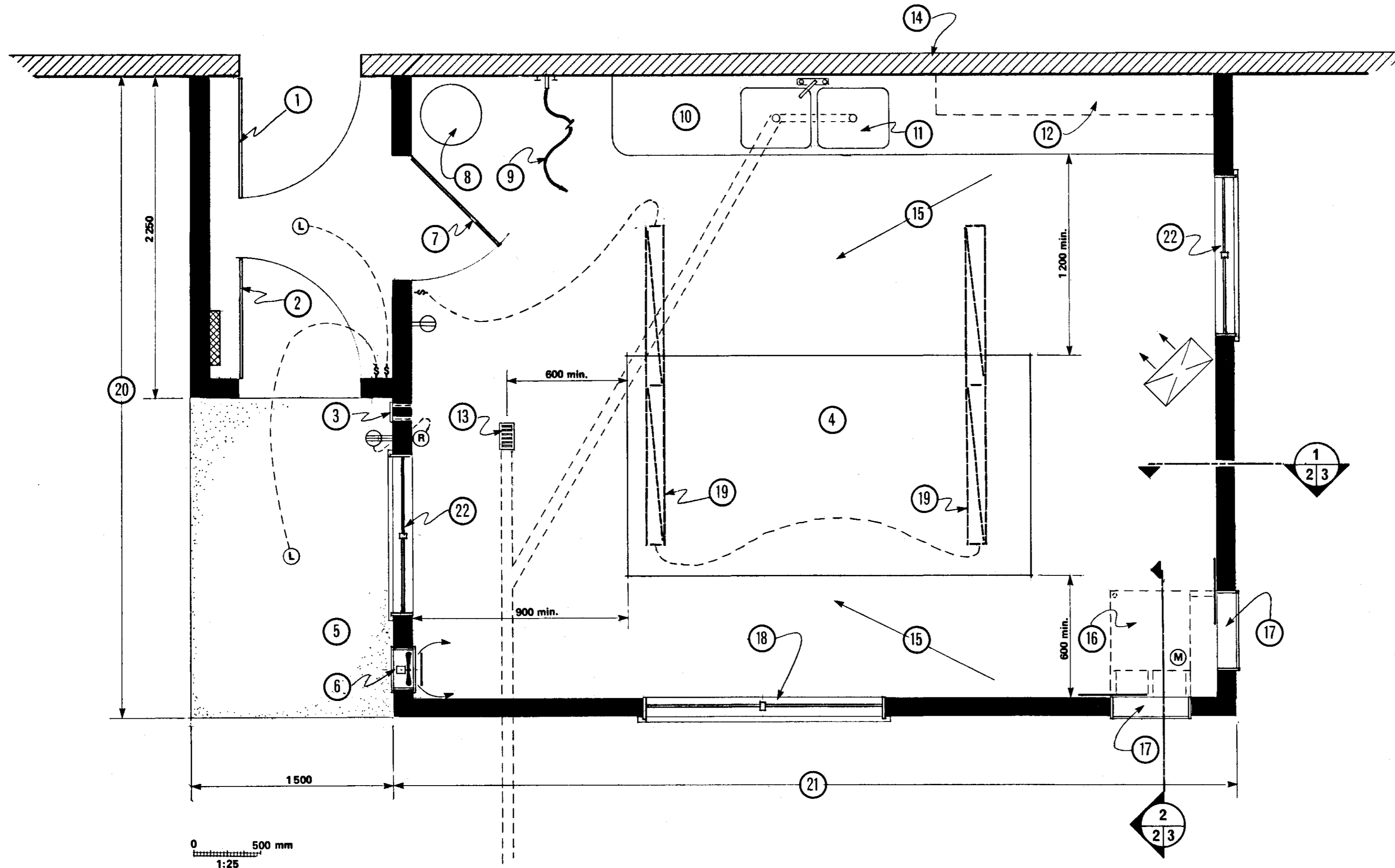
This plan may require structural and other changes to meet local site conditions, climatic loads, user requirements and applicable building regulations (such as the Canadian Farm Building Code). Before construction, the user of this plan is responsible to ensure that all required changes are made.

SYM	REVISIONS	CHECKED	DATE	APPROVED



MILKHOUSE – OUTSIDE VESTIBULE

DESIGNED <i>J.E.T.</i>	DATE 79-02	PLAN <b>M-2512</b>
DRAWN <i>A.Mosier</i>	REVISED	
TRACED <i>R. PELLA</i>	DETAIL NUMBER <b>A</b>	SHEET 1 OF 3
CHECKED <i>H.A.J.</i>	ORIGINATES ON SHEET <b>B</b> DRAWN ON SHEET <b>C</b>	



- 1 910 x 2030 mm self-closing door to barn or milking parlour; barn to have exhaust fan ventilation to keep odours out of milk room, check with provincial milk authority for special entrance requirements
- 2 910 mm insulated door with double-glazed window panel, screen door for summer
- 3 hose port, at least 150 mm above floor inside or grade outside
- 4 bulk milk tank with attached cooling unit; if cooling unit is separate add vent panels (17) and compressor platform (16); see also sheet 3 for details
- 5 100 mm concrete sidewalk on compacted granular fill
- 6 air intake fan with baffle, approx. 250 L/s capacity, manual switch
- 7 910 x 2050 mm self closing door
- 8 water heater; see Planning Your Milkhouse (Agriculture Canada publication 1620)
- 9 6 000 mm of hose connected to hot and cold mixing faucet for washing of tanks and floors, wall bracket to hold hose when not in use
- 10 drain board
- 11 double sink to drain with gas trap and vent stack
- 12 work counter with storage above
- 13 4" floor drain c/w slotted cover, sediment catch and gas trap
- 14 existing barn wall, seal to exclude barn odours, vapour-proof
- 15 slope floor 1:50 min.
- 16 optional compressor platform, required only for remote milk cooling compressor
- 17 insulated sliding panel, open for summer ventilation, required only for remote milk cooling compressor
- 18 double-glazed picture window and insulated wall panel below, both secured only with casings screw fastened for easy removal when changing bulk tank (4)
- 19 fluorescent fixture, locate to fall clear of bulk tank openings in event of glass breakage

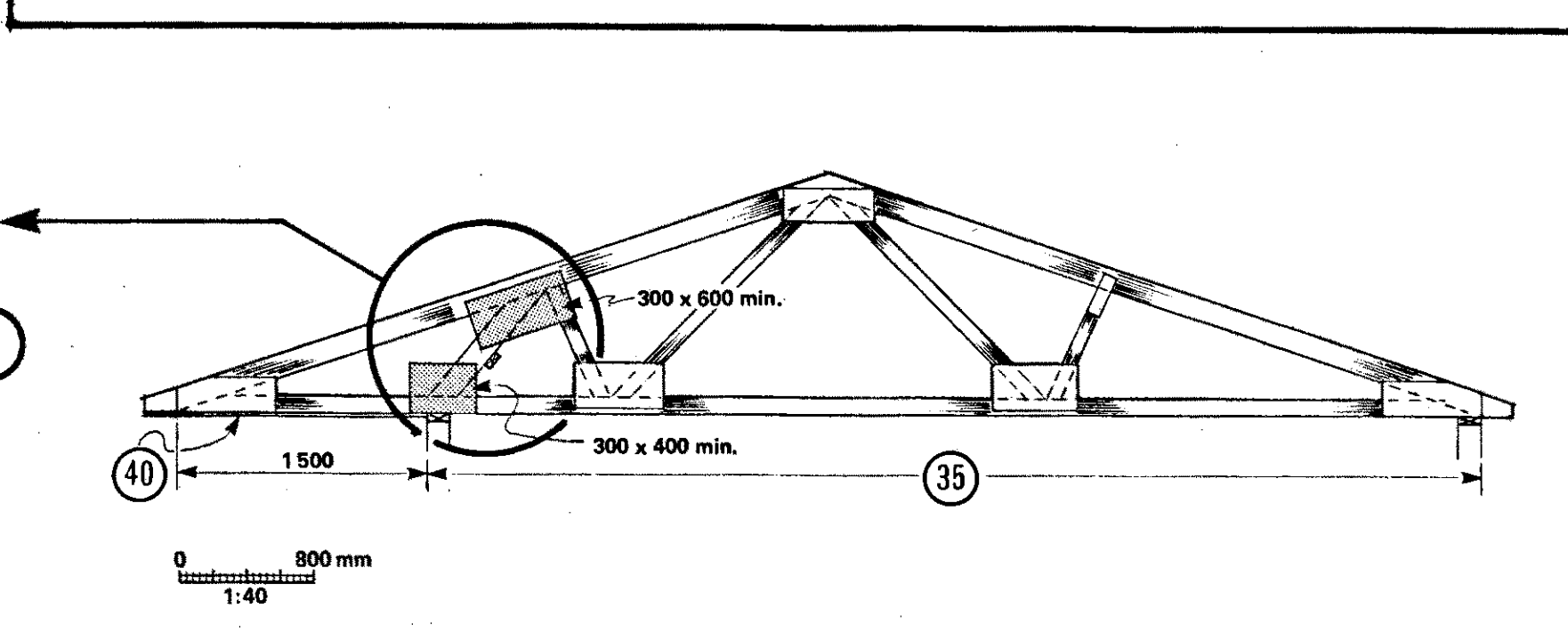
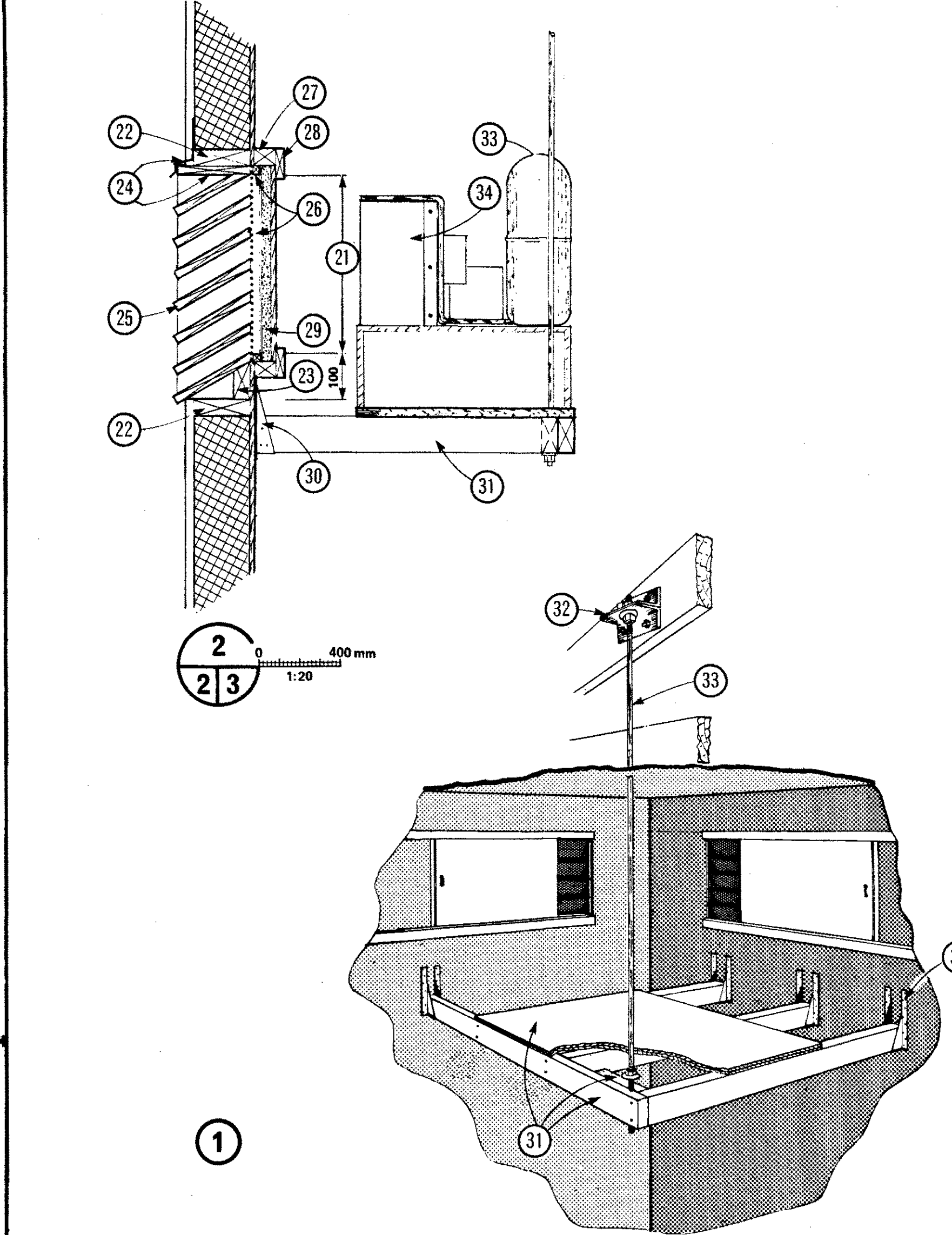
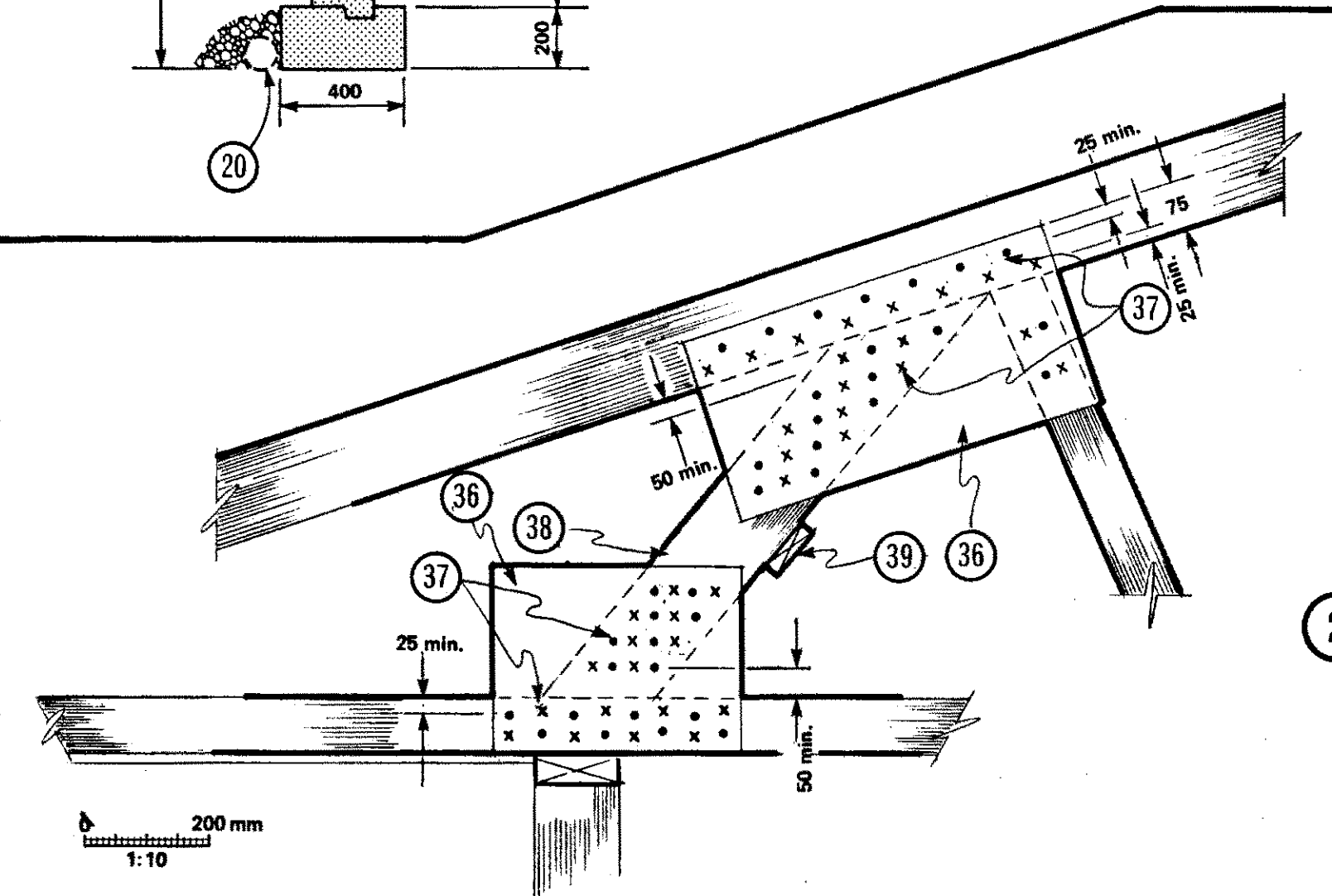
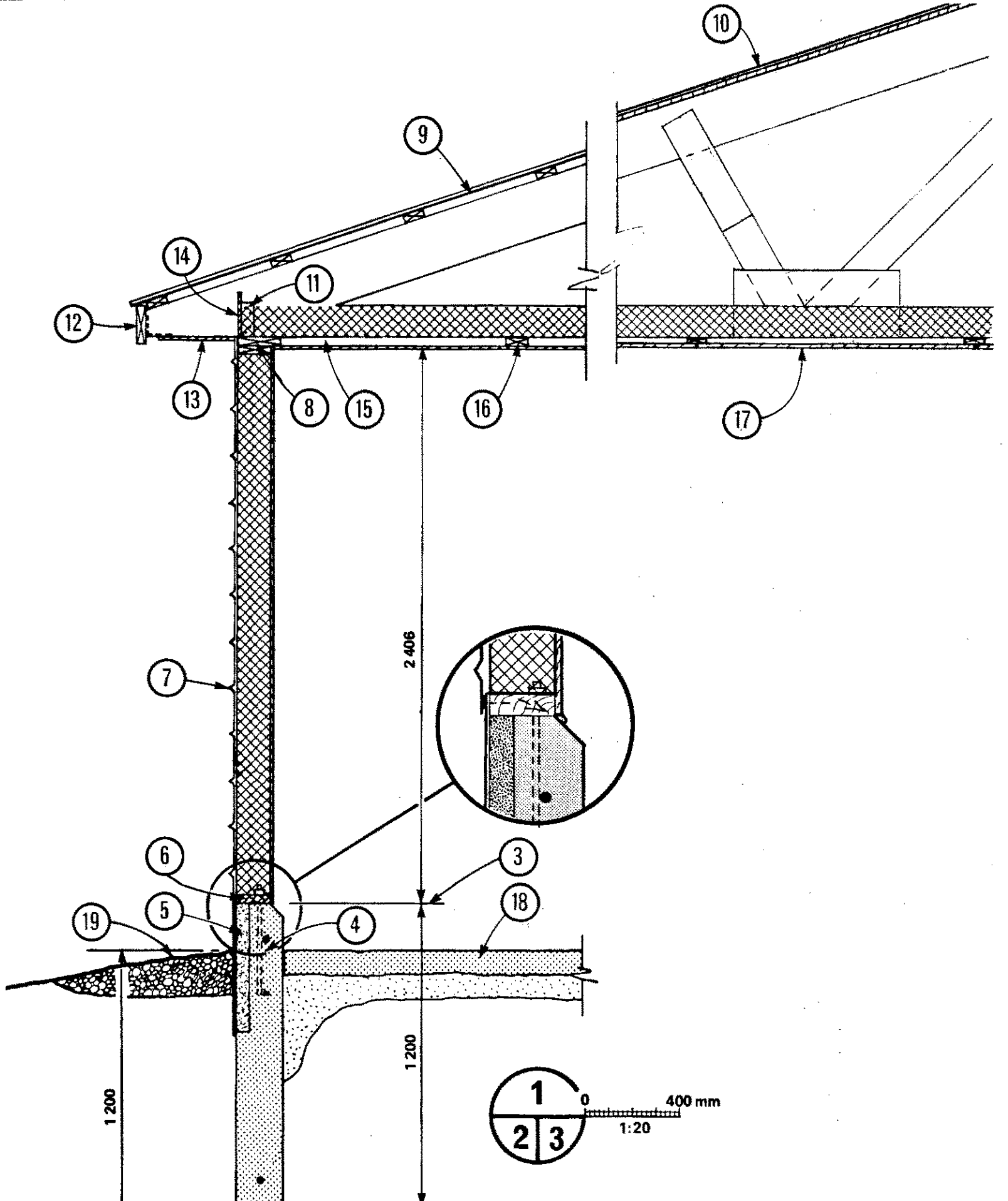
	number of milk cows in herd				
	10 - 28	24 - 36	34 - 48	44 - 72	66 +
20	4 200	4 200	4 800	4 800	5 400
21	5 100	5 700	6 300	6 900	8 100

- (L) incandescent lampholder
- ☐ 2-40 W fluorescent fixture (low temperature ballast)
- ⊕ duplex convenience outlet
- ⊕ 220 V weatherproof exterior outlet for tank truck pump (if required)
- (M) compressor motor outlet, to suit motor characteristics
- ⚡ single pole switch
- (R) 1.5 kW rated manual switch
- ☐ 3 to 5 kW ceiling suspended fan-forced electric heater, built-in thermostat wired to control heater only, fan to run continuously during heating season
- ▨ distribution panel

SYM	REVISIONS	CHECKED	DATE	APPROVED

FLOOR PLAN &  
ELECTRICAL LAYOUT

DESIGNED <i>JET</i>	DATE 79-02	<b>PLAN</b> <b>M-2512</b>									
DRAWN <i>R. PELLA</i>	REVISED										
TRACED	<table border="1" style="font-size: small;"> <tr> <td style="text-align: center;">A</td> <td>DETAIL NUMBER</td> <td style="text-align: center;">A</td> </tr> <tr> <td style="text-align: center;">B</td> <td>ORIGINATES ON SHEET</td> <td style="text-align: center;">B</td> </tr> <tr> <td style="text-align: center;">C</td> <td>DRAWN ON SHEET</td> <td style="text-align: center;">C</td> </tr> </table>	A	DETAIL NUMBER	A	B	ORIGINATES ON SHEET	B	C	DRAWN ON SHEET	C	<b>SHEET 2 OF 3</b>
A	DETAIL NUMBER	A									
B	ORIGINATES ON SHEET	B									
C	DRAWN ON SHEET	C									
CHECKED <i>H.A.J.</i>											



- 1 inside view of optional ventilation louvers and compressor platform
- 2 standard CPS truss to suit span and local design loads, modified as shown
- 3 datum line
- 4 200 mm concrete foundation, 2-15M rebar continuous, 13 x 300 mm anchor bolts @ 1200 mm oc
- 5 50 x 550 mm expanded polystyrene insulation covered with 5 mm high-density recompressed asbestos board drilled and nailed to 6 before applying 7
- 6 38 x 140 mm sill plate, pressure-treated
- 7 exterior siding; asphalt felt wind stop, 38 x 140 mm studs @ 600 mm oc, RSI-3.5 friction-fit insulation, 100 µm polyethylene vapour barrier, 8 mm plywood finished impervious to washing, joints and edges caulked
- 8 38 x 140 x 4800 mm lower and 38 x 184 x 4800 mm upper plates
- 9 metal roofing on 38 x 89 mm nailers spaced as per roofing manufacturer, roof trusses @ 1200 mm oc
- 10 asphalt shingles on 9.5 mm plywood sheathing, use H-clips at unsupported plywood edges, roof trusses @ 600 mm oc
- 11 framing anchor, each side of truss
- 12 face board; 50 mm for trusses 1200 mm oc, 25 mm for trusses 600 mm oc
- 13 plywood soffit with 50 mm screened inlet
- 14 plywood baffle
- 15 blocking between strapping at each truss
- 16 insulated ceiling; RSI-3.5 friction-fit insulation between trusses, 38 x 89 mm strapping and blocking @ 1200 mm oc, 100 µm polyethylene vapour barrier, 7.5 mm plywood same finish as walls
- 17 insulated ceiling same as 16 except; trusses @ 600 mm oc, 19 x 89 mm strapping and blocking 1200 mm and 600 mm oc
- 18 100 mm concrete floor, 150 µm polyethylene vapour barrier, compacted sand or gravel, slope floor to drain, caulk at wall
- 19 900 x 100 mm deep coarse gravel splash pad
- 20 optional 4" footing drain, if high water table exists
- 21 height and width of louver to be 150 mm greater than condenser size
- 22 38 x 140 mm header and sill
- 23 framing ripped from 38 x 89 mm
- 24 19 x 165 mm framing, top and sides, provide flashing at top
- 25 19 x 184 mm louvers
- 26 19 x 19 mm stop, all around over screening
- 27 spacer block from 50 mm lumber
- 28 19 x 64 mm guide, top and bottom
- 29 25 mm polystyrene, glued to 18.5 mm plywood door
- 30 joist hanger nailed through interior cladding into solid framing
- 31 compressor platform; 38 x 89 mm supports, blocking at corner for rod hanger, 18.5 mm plywood base over
- 32 double angle bracket, 51 x 51 mm steel angles, fasten to top chord of truss
- 33 3/8" diam. rod hanger with 2 nuts and washers each end
- 34 remote condenser unit mounted on 31
- 35 see 21, sheet 2
- 36 12.5 mm sheathing grade Douglas fir plywood gusset, both sides
- 37 4 x 63 mm concrete nails, both sides of truss, same nail number as specified for original truss heel joint
- 38 additional member same size as top chord of truss
- 39 19 x 89 mm stiffener, continuous
- 40 soffit required to prevent buckling of lower chord

SYM	REVISIONS	CHECKED	DATE	APPROVED

**CANADA PLAN SERVICE**

**WALL SECTION & CONSTRUCTION DETAILS**

DESIGNED <i>J.E.T.</i>	DATE 79.02	PLAN
DRAWN R. PELLA	REVISED	M-2512
TRACED	DETAIL NUMBER	A
CHECKED H.A.J.	ORIGINATES ON SHEET	B
	DRAWN ON SHEET	C

SHEET 3 OF 3