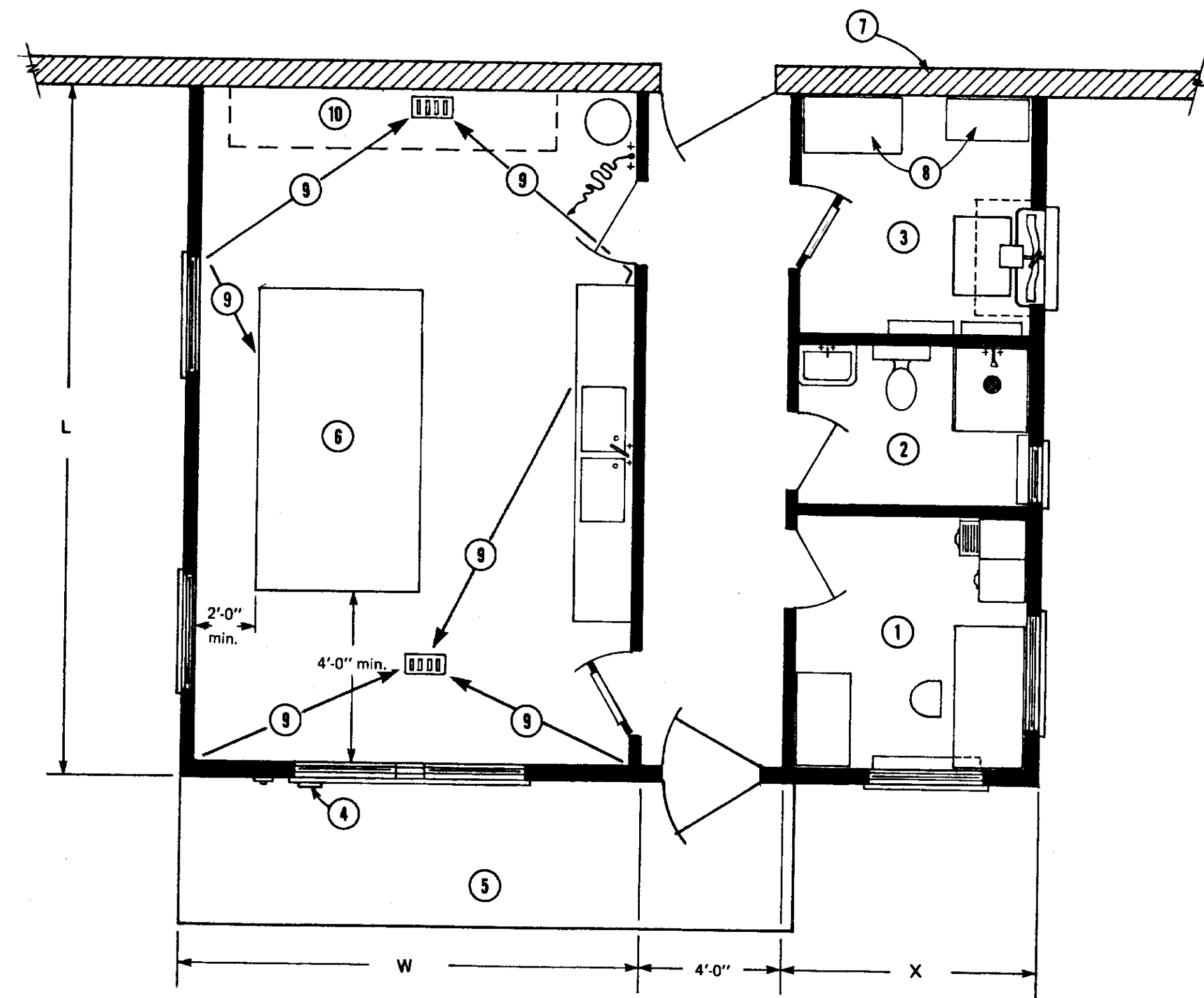


- 1 office
- 2 washroom with shower, toilet and sink
- 3 equipment room
- 4 hoseport, at least 6 in. above floor
- 5 5 in. thick concrete sidewalk on compacted granular fill
- 6 bulk milk tank with attached cooling unit; if cooling unit is separate, locate in ③ and add ventilation, see sheet 2
- 7 existing barn wall, seal to exclude barn odors
- 8 storage cupboards
- 9 slope floor 1/4"/1'
- 10 location of milk receiving and pipeline washing equipment

MILKHOUSE SIZING

No. of cows	40-60	60-80	80-100
W	16'-0"	16'-0"	18'-0"
X	8'-0"	10'-0"	12'-0"
hallway	4'-0"	4'-0"	4'-0"
TOTAL WIDTH	28'-0"	30'-0"	34'-0"
L	22'-0"	24'-0"	26'-0"

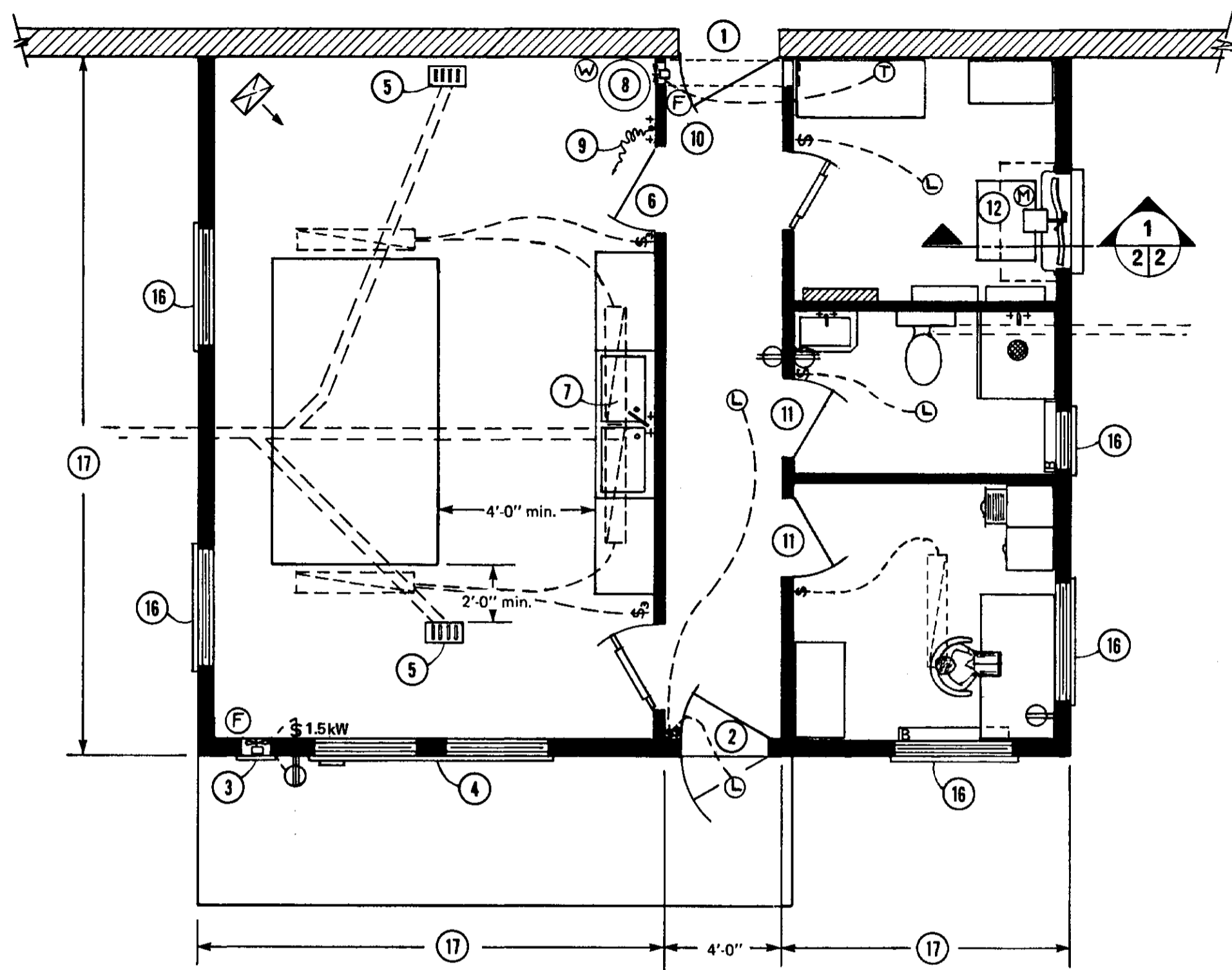


ONE SET OF DRAWINGS AND LEAFLETS SHOULD INCLUDE

CPS no.	sheet no.	title
2513	1	milkhouse-office, washroom, and equipment room plan and details
2513 and 9102 optional	2	truss erection and bracing roof truss plan to suit span and snow load

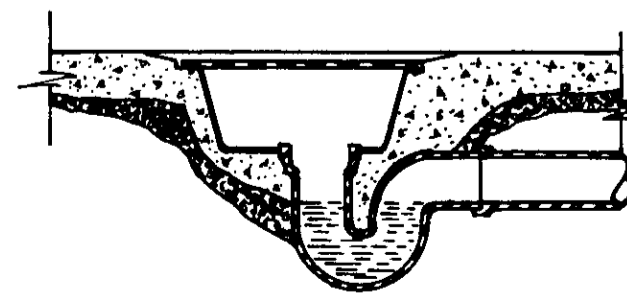
WARNING
 This plan may require structural and other changes to meet local site conditions, climatic loads, user requirements and applicable building regulations (such as the Canadian Farm Building Code). Before construction, the user of this plan is responsible to ensure that all required changes are made.

SYM	REVISIONS	CHECKED	DATE	APPROVED
		MILKHOUSE, OFFICE, WASHROOM AND EQUIPMENT ROOM		
DESIGNED J.A.M.	DATE 79-02	PLAN		
DRAWN A.P. Menden	REVISED 83-11	2513		
TRACED	DETAIL NUMBER A	SHEET 1 OF		
CHECKED J.E.T.	ORIGINATES ON SHEET B	DRAWN ON SHEET C		

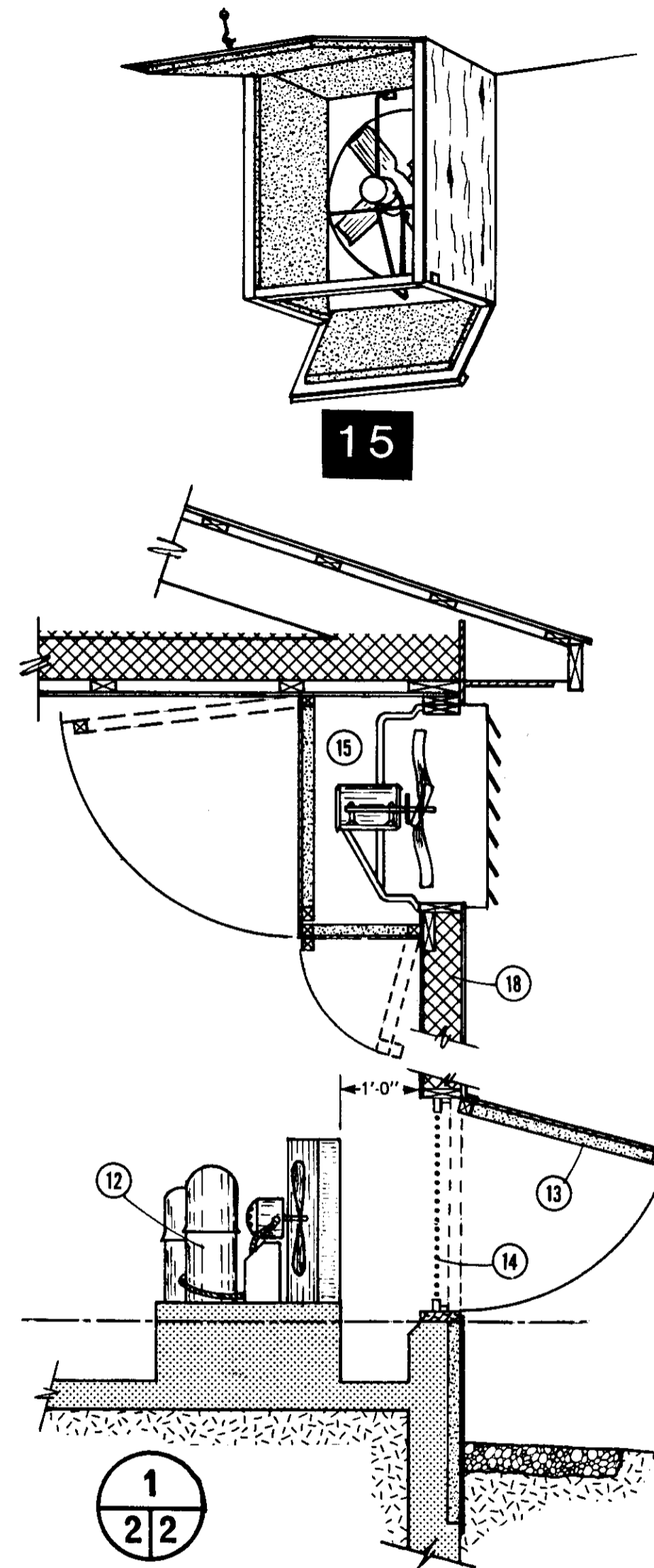


ELECTRICAL

- | | | |
|-----------------------|------|-------------------------------------|
| ceiling | wall | |
| (L) | (L) | Incandescent Lampholder |
| (L) | (L) | Flourescent Fixture (draw to scale) |
| (O) | (O) | Duplex Convenience Outlet |
| (O) | (O) | Special Purpose Outlet |
| (F) | (F) | Fan Outlet |
| (M) | | Motor |
| (T) | | Thermostat |
| (W) | | Water Heater (draw to scale) |
| (S) | | Single Pole Switch |
| (S ₃) | | Three Way Switch |
| (H) | | Fan Forced Heater (draw to scale) |
| (B) | | Baseboard Unit Heater |
| (DP) | | Distribution Panel |
| (S _{1.5kW}) | | 1.5kW Rated Manual Switch |



5



15

- 1 3'-0" x 6'-10" self-closing door to barn or milking parlor; barn to have exhaust fan ventilation to keep odors out of milkroom; check with provincial milk authority for special entrance requirements
- 2 3'-0" insulated door with double-glazed window panel, screen door for summer
- 3 optional air intake fan approx. 550 cfm capacity, manual switch, outside weather-hood
- 4 double-glazed picture window and insulated wall panel below; inside and outside window casings screwed in place for easy removal when changing bulk tank
- 5 4" floor drain with 1/4" steel cover plate, 3/4" holes for drainage. Form sump in concrete with plastic dishpan, cut hole for P-trap. Use temporary 1/2" plywood cover to form rabbet in concrete.
- 6 3'-0" x 6'-10" self-closing door
- 7 double sink with drain, gas trap and vent stack
- 8 water heater
- 9 20'-0" hose connected to hot & cold mixing faucet for washing of tank and floors, wall bracket to hold hose when not in use
- 10 optional 12" 2-speed fan and overhead duct to transfer heat from (12) to milkroom, control with high/low speed selector switch with off neutral, wired in series with thermostat
- 11 2'-8" doors
- 12 cooling compressor on concrete platform
- 13 rectangular wall opening is 6" greater than face dimension of condensor coil unit, hinged door with 2" insulation, secured open in summer, closed in winter
- 14 removable insect screen, clean frequently in summer
- 15 backdraft louvers, inside weather hood and exhaust fan to exceed fan capacity of compressor unit (12); control fan with 3-position switch indicating "on automatic (with milk cooler)" or "off," or "on manual", weather hood closed for winter, open for summer
- 16 window screened and double-glazed, open for summer ventilation
- 17 dimension varies, see table sheet 1
- 18 insulated exterior wall

SYM	REVISIONS	CHECKED	DATE	APPROVED

CANADA PLAN SERVICE

PLAN AND DETAILS

DESIGNED J.A.M.	DATE 79-02	PLAN 2513
DRAWN R. Morden	REVISED 83-11	
TRACED	DETAIL NUMBER A	SHEET 2 OF
CHECKED V.E.T.	ORIGINATES ON SHEET B DRAWN ON SHEET C	