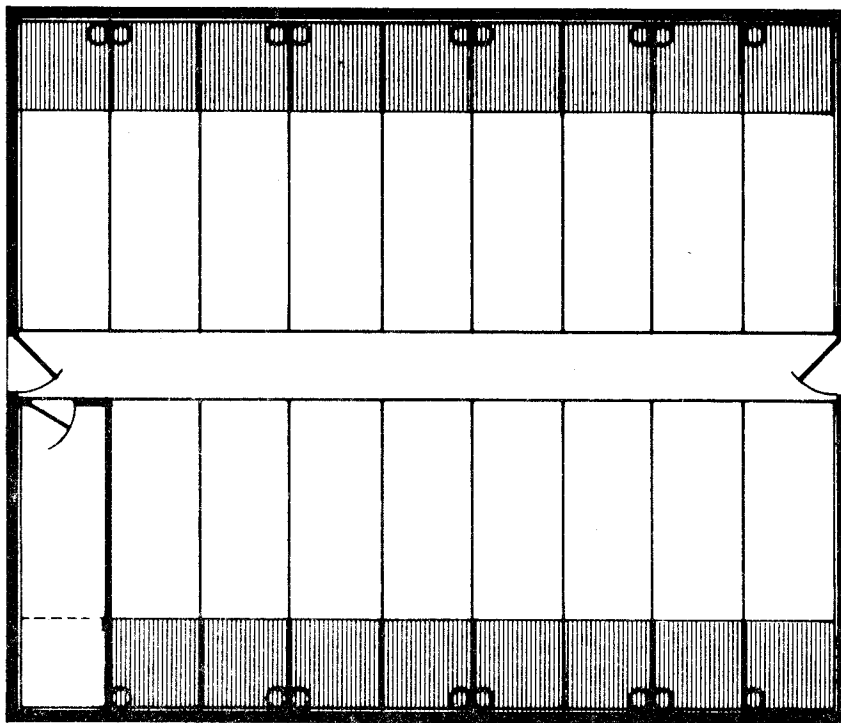


# HOG BARN (FARROW-TO-FINISH PENS)



PLAN



The Canada Plan Service prepares detailed plans showing how to construct modern farm buildings, livestock housing systems, storages and equipment for Canadian Agriculture.

This leaflet gives management information and describes one of these detailed plans. To obtain a copy of the Canada Plan Service detailed plan, contact your local provincial agricultural engineer or extension advisor.

## HOG BARN (FARROW-TO-FINISH PENS)

PLAN Q-3112 NEW 9:76

This plan is designed for the small swine enterprise where flexibility in use of pens is required. All the pens are the same size and are designed so that they can be adapted to any and all parts of the operation: dry sows, boars, farrowing, weanling, and growing finishing. These pens are intermediate in size between regular feeder pens and farrowing pens. They are 4'-0" or slightly more in width and 13'-0" long. For use in farrowing a front creep and guard rails are installed within the pen.

### Ventilation

The plan includes some ventilation details but, before constructing the barn, it is recommended that the ventilating system be designed to meet the requirements of the anticipated animal loading. See pages 35-59 of "Confinement Swine Housing", Agriculture Canada Publication 1451, or Regional Agricultural Engineer.

### Manure Systems

The plan illustrates two alternative manure systems a 1 partial slotted floor over pits, 2 manual scrape. System 1 is a

liquid system to be used without bedding. The shallow pit could be used to flush manure into an underground storage. The deeper pit provides in the barn storage. If bedding is used, the manual scrape system is recommended.

### Building Size and Capacity

The building is 32' in width and can be constructed to any length in modules of 4'. The pens are arranged in two rows with a service alley down the center. A table on the plan gives the capacity of the barn in building lengths of 28' and 48' for various combinations of uses. For example, the 40' barn has 17 pens and has a capacity of:

- 12 sows farrow-to-finish, including dry sows and boars;
- 15 to 17 sows farrow-to-finish, excluding dry sows and boars;
- 20 to 23 sows farrow-weanling, including dry sows and boars;
- 36 to 38 sows farrow-weanling, excluding dry sows and boars;
- 272 weanlings, from weanling to 60 lb, average 16/pen;
- 170 feeders, from 30 lb to market, average 10/pen.

