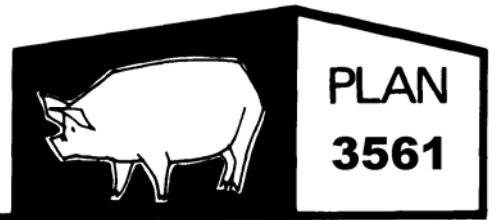
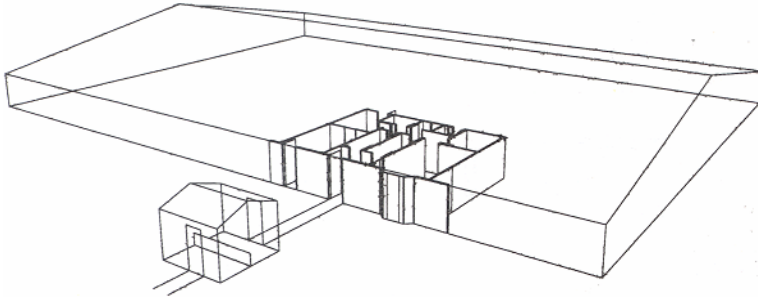


Large Swine Barn Office

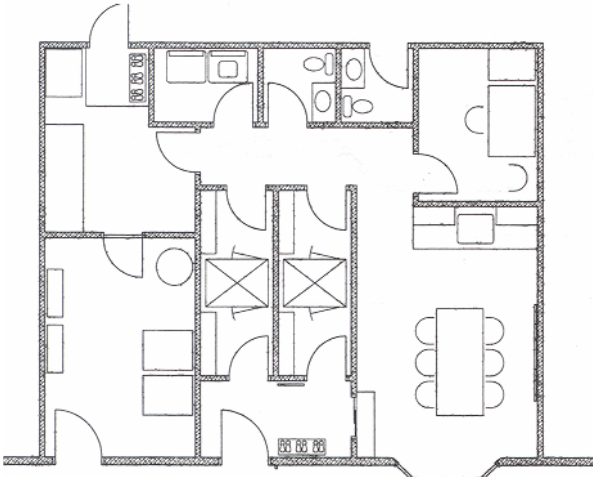


This barn layout is part of a series of functional plans intended to show alternative designs for barn planning purposes.



Biosecurity is an important factor in pig barn design as farmers become more diligent in reducing opportunities for diseases to enter their herds. The purpose of a biosecure barn-entry design is to prevent barn workers and visitors from carrying swine diseases into the barn. The size of the office and entry area will depend on the size of the pig barn and may be half the size shown in the layout, or it may be larger depending on the features required.

The entry is the first line of defence. The layout shows an optional building where visitors can leave their shoes, step over an 18" high barrier, put on barn boots and proceed to the main barn. There is a sliding access window to the staff/office area for visitors delivering small, clean items. Before entering the barn, visitors must shower and read a sign outlining health protocol. Street clothing is left on one side of the showers, and barn clothing is available on the other side.



Once the visitors are in the main office area, they can stay there or go to the barn boots storage area. Once the barn boots are on, visitors may enter the main pig barn area. The office/staff area can be used for lunches and meetings with staff and visitors. A large bow window will brighten this area and give a welcome contrast to working inside windowless pig barn rooms.

Privacy is an issue for both men and women who work in or visit the barn. This layout features separate showers with an occupancy tight (activated by a motion sensor), which indicates when the change room is in use. An alternative is to hang a key on the wall outside the change rooms next to a "Knock Before Entering" sign.

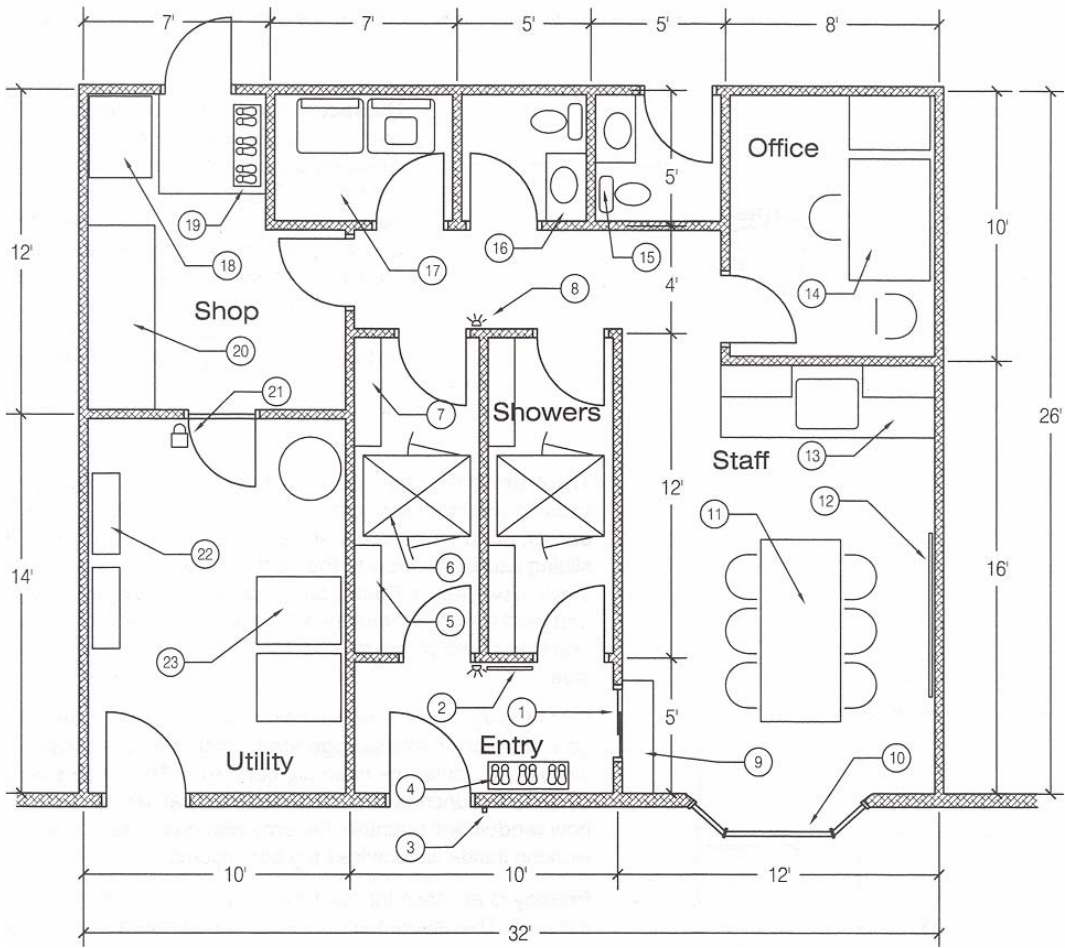
Barn boots are kept separate from the office with a recessed floor or barrier at the barn door. There is easy access to the health supply fridge from the barn, and access to a separate washroom from the barn.

The entry design is only one part of biosecurity. Management of the protocol for visitors and staff entering the barn is important, as well as consideration of other ways disease can enter the barn



CANADA
PLAN SERVICE

The Canada Plan Service prepares leaflets showing how to construct modern farm buildings, livestock housing systems, storage and equipment for Canadian agriculture. Permission is given to copy this leaflet. You may contact the Canada Plan Service through your provincial agriculture department or on the Internet at www.cps.gov.on.ca



Notes:

- | | | |
|------------------------------------|--------------------------------------|-----------------------------|
| 1. Sliding window | 9. Counter | 17. Washer, dryer |
| 2. Sign showing protocol | 10. Bow window | 18. Health supply fridge |
| 3. Doorbell | 11. Table | 19. Barn boots, lower floor |
| 4. Barn boots | 12. White board | 20. Workbench |
| 5. Locker for street clothes | 13. Counter, sink, microwave, fridge | 21. Locked door |
| 6. Shower | 14. Office | 22. Electrical panels |
| 7. Towels, coveralls, barn clothes | 15. Barn washroom | 23. Boilers |
| 8. Occupancy light | 16. Office washroom | |