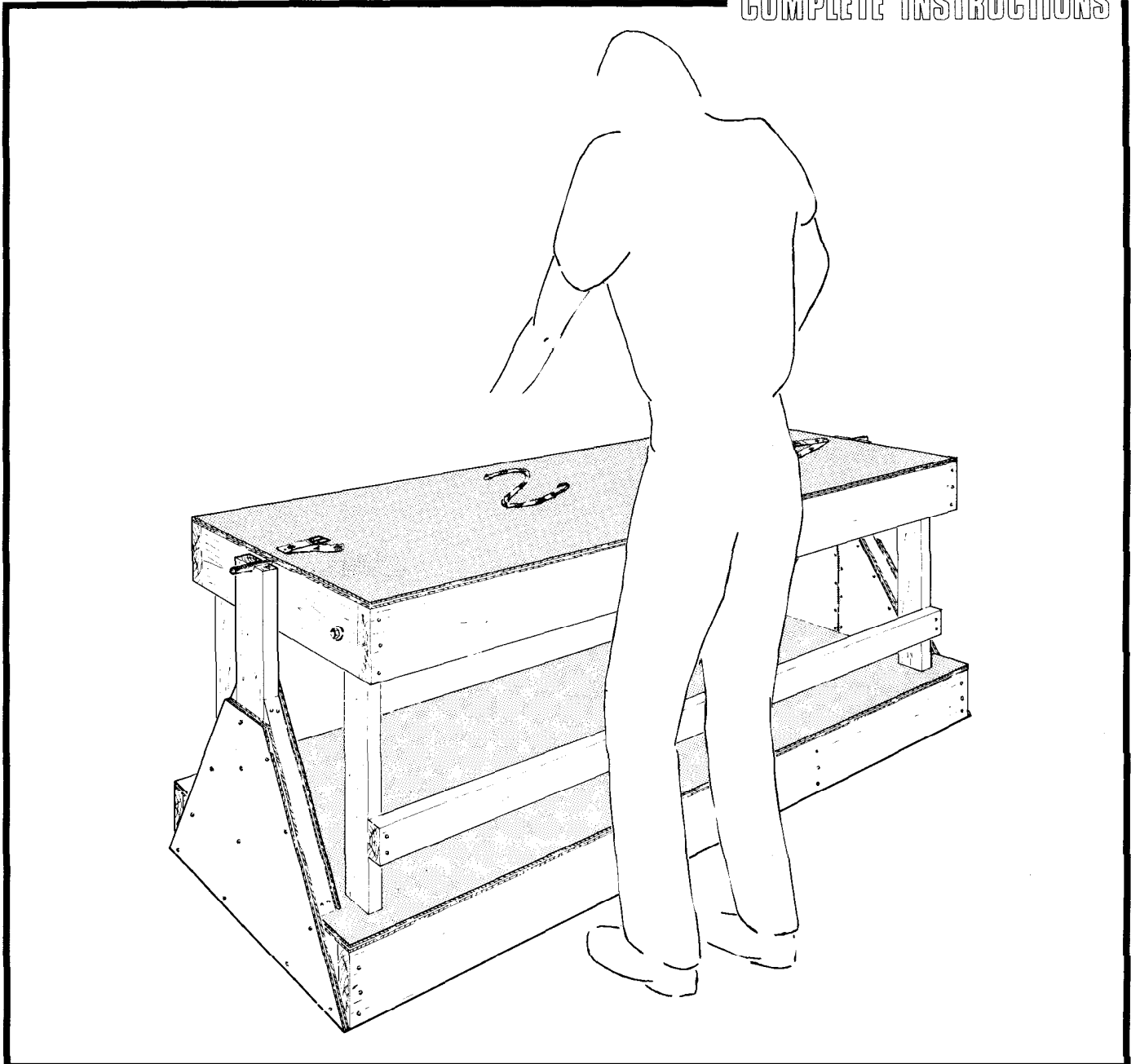


SHEARING TABLE

COMPLETE INSTRUCTIONS



The Canada Plan Service prepares detailed plans showing how to construct modern farm buildings, livestock housing systems, storages and equipment for Canadian Agriculture.

This leaflet gives management information and describes one of these detailed plans. To obtain a copy of the Canada Plan Service detailed plan, contact your local provincial agricultural engineer or extension advisor.

SHEARING TABLE

PLAN 4551 NEW 84:07
(Formerly Q-4551)

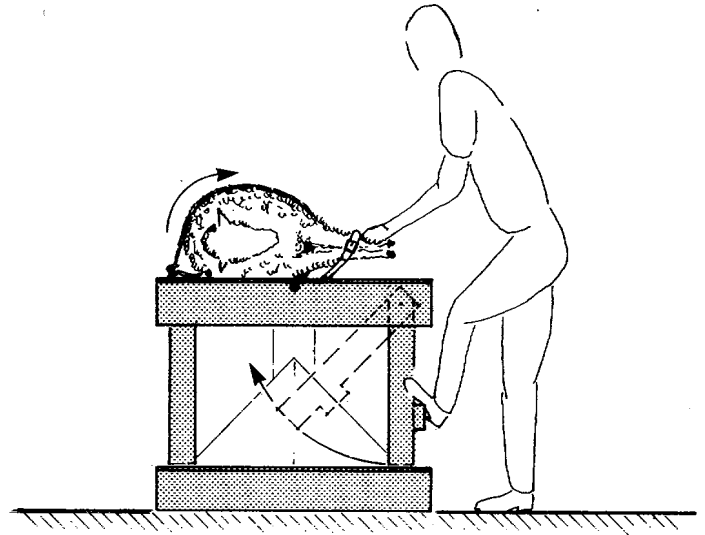
This shearing table was developed by John Lightle, Campbellford, Ontario. John runs a flock of around 400 ewes. Using his shearing table he is able to trim the feet and shear about 6 ewes per hour including rolling and packing the wool.

The method used in shearing- sheep with this table involves the following procedure; first the tabletop is tilted to a vertical position by kicking out the legs on the side nearest the operator. With the ewe standing beside the table the center belly strap is wrapped around the ewe's stomach and back and is fastened in place. The table with ewe attached is next returned to the horizontal position. The front legs are first securely strapped in place, followed by the rear leg strap. The center belly strap is then removed and shearing can now begin.

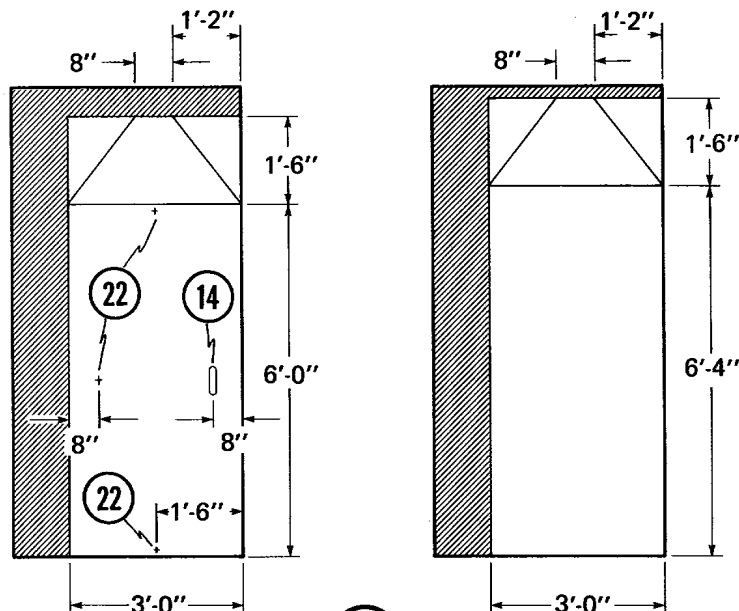
The side of the ewe facing the operator is sheared first, the ewe is then turned as if on a "spit" by rotating the back of the ewe toward the operator thereby enabling the other side to be sheared. The ewe's stomach may be sheared on the table or between the operator's legs in the conventional manner on the ground.

Shearing is a highly skilled job and many sheep owners are discouraged from expanding their flocks because of the difficulty in obtaining good shearers.

While this shearing table will not substitute for a good custom shearer, it might help the small flock owner do the job himself, at a slower pace.



1. table top framing detail
2. leg hinge detail
3. base framing detail
4. plywood cutting details for table top and base
5. 2" x 6" side frame members
6. 2" x 6" end framing members, notch for 12 & drill for 11
7. 2" x 4" fixed leg
8. 2 x 4" x 1'- 10" swinging leg, drill for 10
9. 2" x 4" kick bar
10. 1/2" diam. x 1 1/2" pipe bushing
11. 3/8" x 6" bolt and washers
12. 1" diam. x 6'- 6" pipe axle
13. 1/2" ply wood table top
14. slot to hook body tie down strap
15. leather tie-down strap for legs
16. rubber body strap
17. 2" x 6" base frame members
18. 1/2" ply wood base
19. 1/2" ply wood gusset
20. 2" x 6" axle support, notch for 12
21. 2" x 4" bracing
22. strap connection points



4

