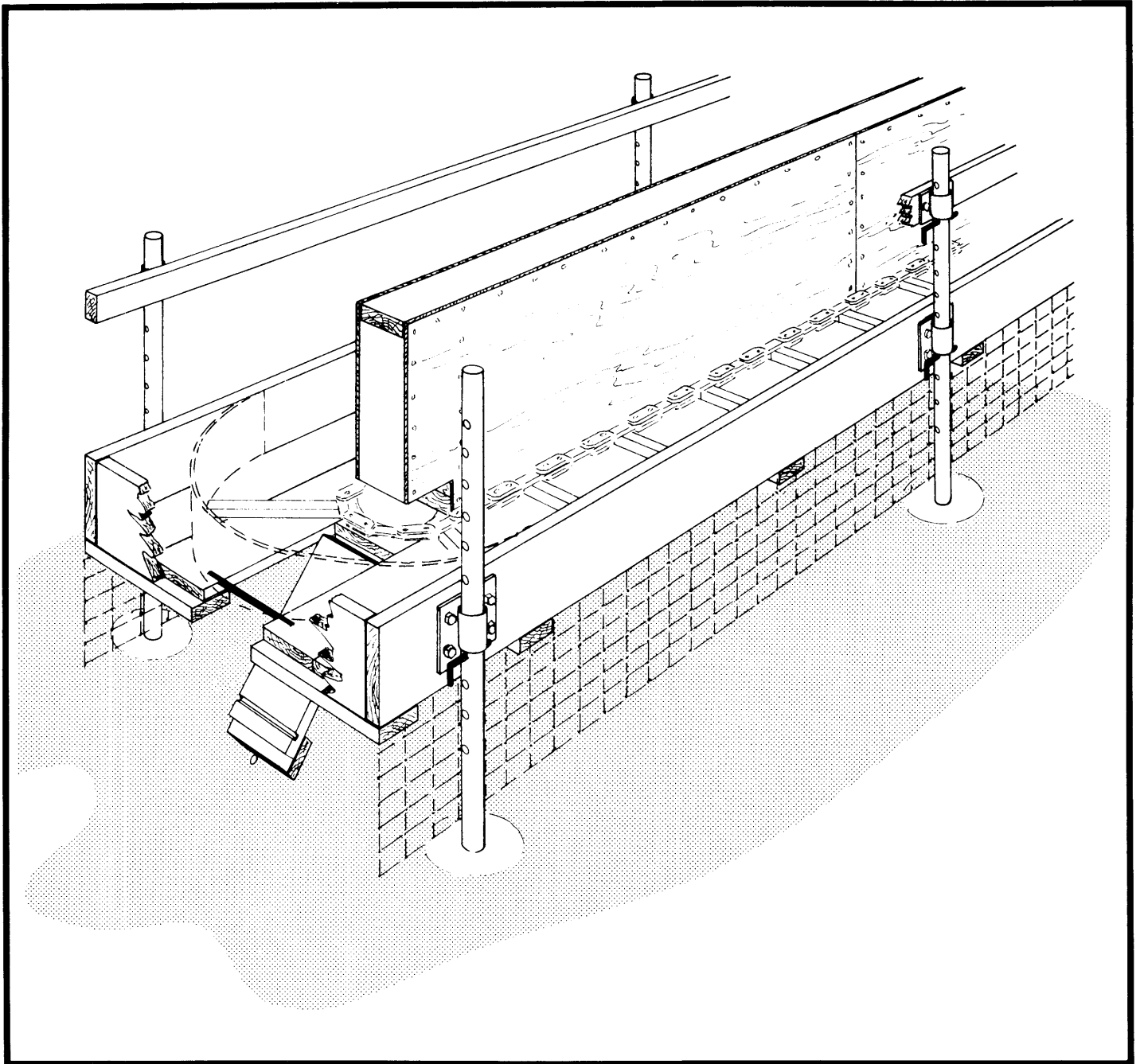


ADJUSTABLE FEED BUNK ADAPTED FOR SHEEP



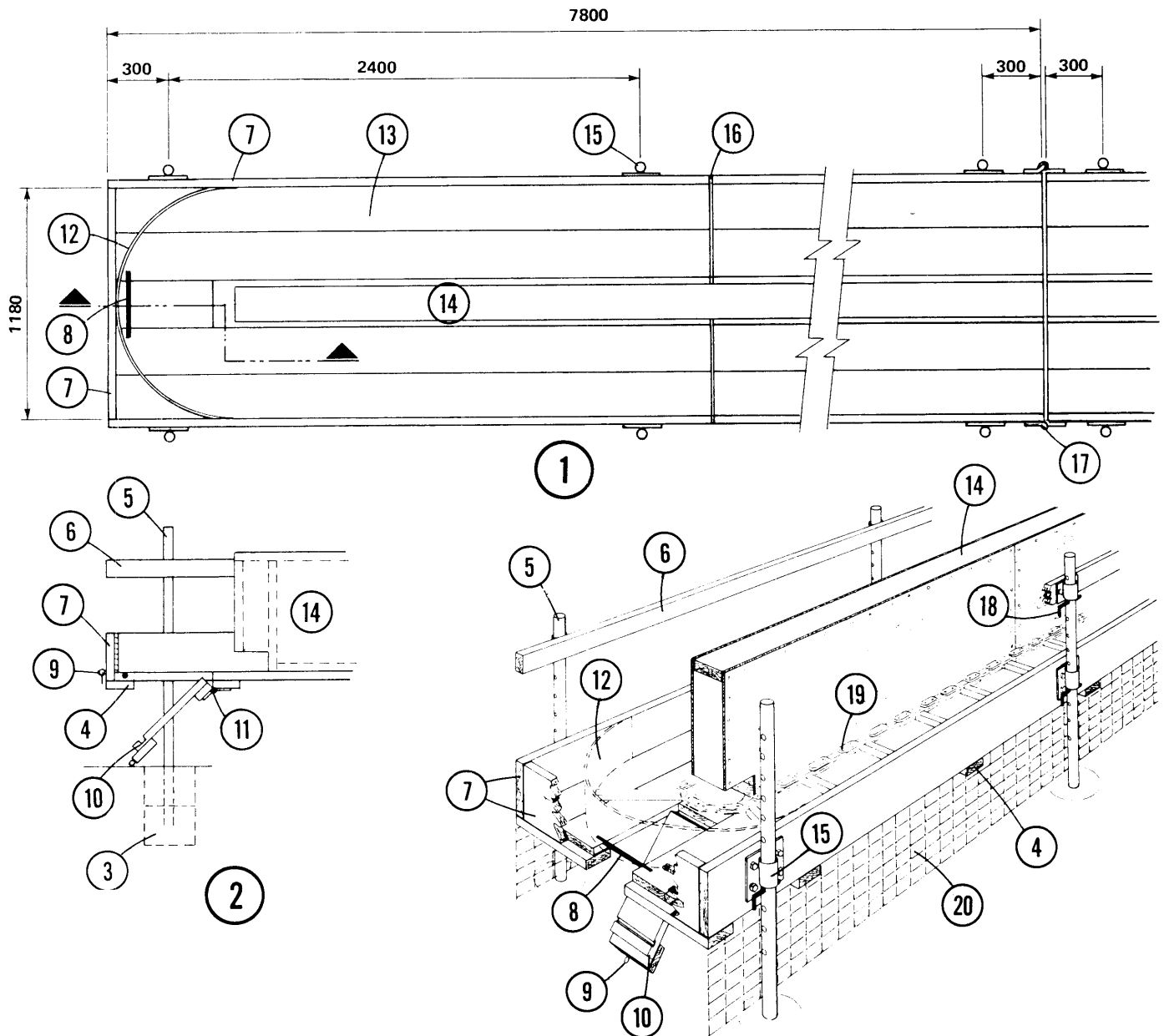
ADJUSTABLE FEED BUNK ADAPTED FOR SHEEP

PLAN M – 4612 NEW 82 : 07

This feed bunk is designed mainly for inside use. It is assembled in lengths of 7.8 m. The bunk and guard rails move upward as the manure builds up around the bunk. The use of four jacks to raise the bunk, one notch at a time, is suggested.

Plywood partitions placed down the center of the feed bunk and crosswise at each pen partition prevent lambs from leaving their pen if they get into the feed bunk. If lambs in the feeder become a problem, hang a piece of 38 x 140 mm board from the top guard rail with two chains. The ewes can shove the 38 x 140 mm inward for feeding, but the board discourages lambs from jumping into the manger. A lamb guard made from chain-link fencing is suspended from the feed trough to the manure pack to keep the lamps from going under the feeder.

Sheep are very susceptible to bacteria that grow in stale silage or other moist feeds that accumulate in and around the feed bunk. The condition is a nervous dis order called 'listeriosis,' or 'circling disease.' Therefore, all unused feed must be cleared out regularly and completely removed from all areas where the sheep have access. A trap door at one end of the feed bunk can be dropped open so that the feeder chain can sweep stale feed to the cleanout point.



1. plan view of feed bunk constructed in lengths of 7800 mm sections to permit height adjustment
2. partial section view
3. concrete footing 200 mm deep for inside locations, 1200 mm or below frost for outside locations
4. 38 x 140 mm cross pieces, 1200 mm oc
5. 1/2" dia. galv. steel pipe post, 1200 mm min above ground, total length to suit concrete footing depth, drill 12.5 mm holes 75 mm oc for pin 18
6. 38 x 89 mm adjustable headrail
7. 38 x 235 feed bunk keeper
8. 12.5 mm dia steel bar, support for conveyor when 10 is open, 350 mm long, imbedded into and flush to top edge of each plank, matching notch in hinged plank cleaning trap 10
9. suitable hook and eye to secure cleaning trap during filling
10. cleaning trap 38 x 235 x 500 mm hinged plank, cut from center plank of floor notch to suit 8
11. suitable hinge and hinge supports
12. 6 mm plywood silage deflector
13. 5 - 38 x 235 mm plank floor
14. feed bunk divider 600 mm high, 6 mm plywood and 38 x 140 mm construction length as req'd, notch at end for feeder chain clearance
15. 2" dia. steel pipe 89 mm long, weld to 7.5 x 150 x 200 mm steel plate, drill 4 - 12.5 mm bolt holes for feed bunk, and weld to 7.5 x 89 x 200 mm steel plate for adjustable head rail 6 drill 2 - 12.5 bolt holes
16. 6 mm plywood partition at each pen, position to prevent lambs from crossing feed bunk
17. truck box hook and fastener at each bunk component
18. 10 mm dia. x 100 mm levelling pin, 2 for each post
19. gutter cleaner type feeder
20. page wire fence 38 mm mesh 600 mm wide length as req'd, attach to bottom of bunk and post at floor level to permit raising and lowering for manure levels