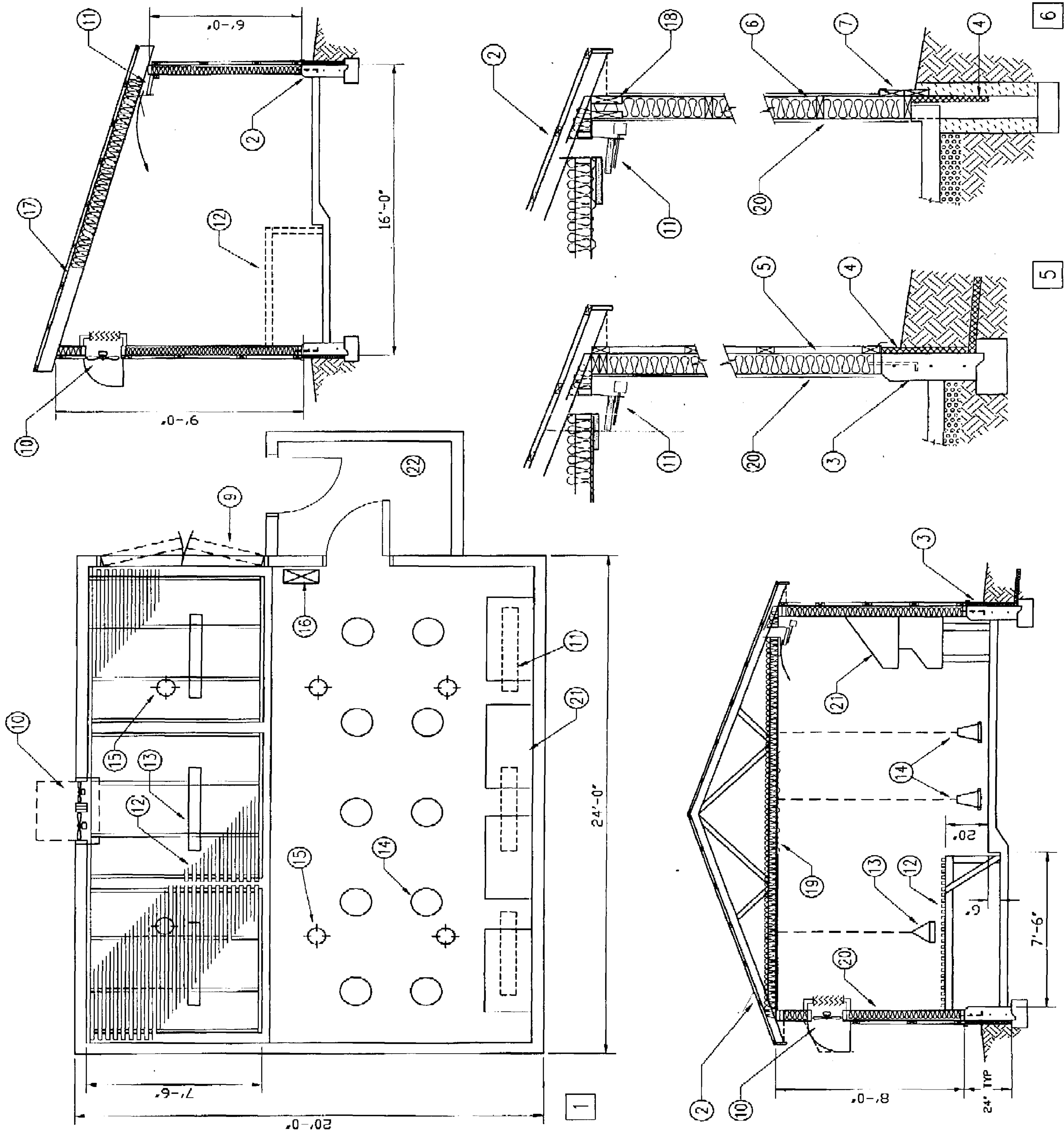


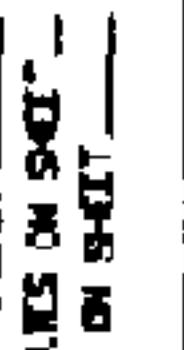


1. floor plan
2. truss roof to suit design load
3. concrete fnd'n on 8" x 16" spread footing; 3-15M rebar
4. rigid insulation with protective covering; horiz extension opt.
5. stud frame option
2x6 studs 24" oc
vapor barrier, R20 insulation
interior sheathing
exterior metal on 2x4 girts
6. post frame option
4x6 PT posts 8'-0" oc
vapor barrier, R20 insulation
interior sheathing
exterior metal on 2x6 girts
2-2x8 for up to 1.8 kPa roof.
7. 6" PT splash plank
8. 4" conc floor over gravel
9. access for small tractor, or hand clean only.
10. two exhaust fans with light baffled enclosure
11. air inlets, 3 @ 6"x48", with baffle cable controlled or balanced.
12. movable roosts; 2x4 frame, 2x2 slats @ 3.5" oc
13. float controlled waterers
14. suspended feeders
15. 60W light circuit on timer
16. 20,000 BTU unit heater
17. shed roof option; 2x8 @ 24" for 1.2 kPa snow; or 2.3 kPa @ 16" oc
18. plate beams, 2-2x8 up to 2.2 kPa roof snow load
19. plywood or steel ceiling over vapor barrier and R28 insulation
20. interior sheathing, plywood or metal
21. roll-away nests (Plan 5015)
22. vestibule entry and storage area



SYM	REVISIONS	CHECKED	DATE	APPROVED
 				
LAYING HOUSE		SMALL FLOCK (300 Hens)		
DESIGNED	D.D.	DATE	1985-04	PLAN
DRAWN	D.D.	REVISED	1988-04	5255
SCALE	1/8" = 1'-0"			
CHECKED	W.W.	