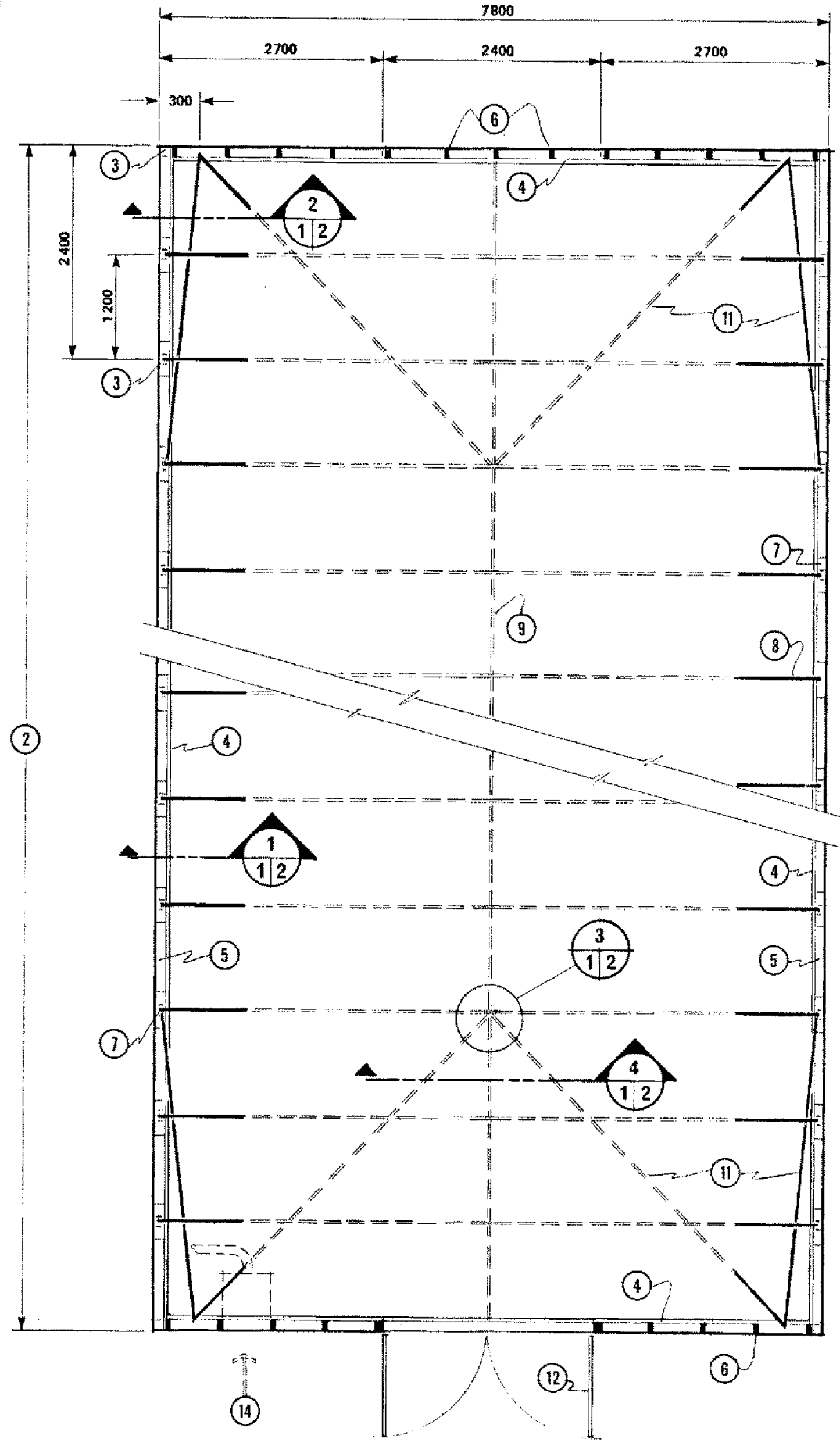


1 0 1000 mm  
1:50



0 1000 mm  
1:50

ALL DIMENSIONS ARE IN MILLIMETRES (mm) UNLESS OTHERWISE SPECIFIED

1	endwall elevation
2	length variable; allow 600 mm polyethylene overlap at each end of greenhouse
3	89 x 89 mm cedar posts to below frost @ 1200 mm oc
4	38 x 184 mm cedar
5	38 x 89 mm plate
6	38 x 89 mm studs @ 600 mm oc
7	38 x 89 x 400 mm scab with hole to accept (8)
8	1 1/4" x 6000 mm galv. pipe frame @ 1200 mm oc
9	1" galv. pipe ridge bolted at each end to and secured to pipe arches with M10 J-bolt, see (4)
10	19 x 89 mm header arch, each end of greenhouse
11	1/2" galv. pipe bracing bent to follow pipe arches; ends flattened and fastened to ridge pipe (9) with M10 J-bolt
12	wood frame, polyethylene covered door; see (2) sheet 2
13	suggested blower location
14	air must enter blower from outside greenhouse
15	radius point; center line of greenhouse and top of plate (5)
16	radius of pipe frame - 3880 mm
17	2-38 x 140 mm header
18	ventilation fan location
19	38 x 89 mm nailing girt nailed to outside of studs, 2-19 x 38 mm battens to secure polyethylene (or use a commercial system)

LIST OF DRAWINGS

sheet no.	title
1	TWO-LAYER POLYETHYLENE GREENHOUSE
2	WALL SECTIONS & DETAILS

**WARNING**  
This plan may require structural and other changes to meet local site conditions, climatic loads, user requirements and applicable building regulations (such as the Canadian Farm Building Code). Before construction, the user of this plan is responsible to ensure that all required changes are made.

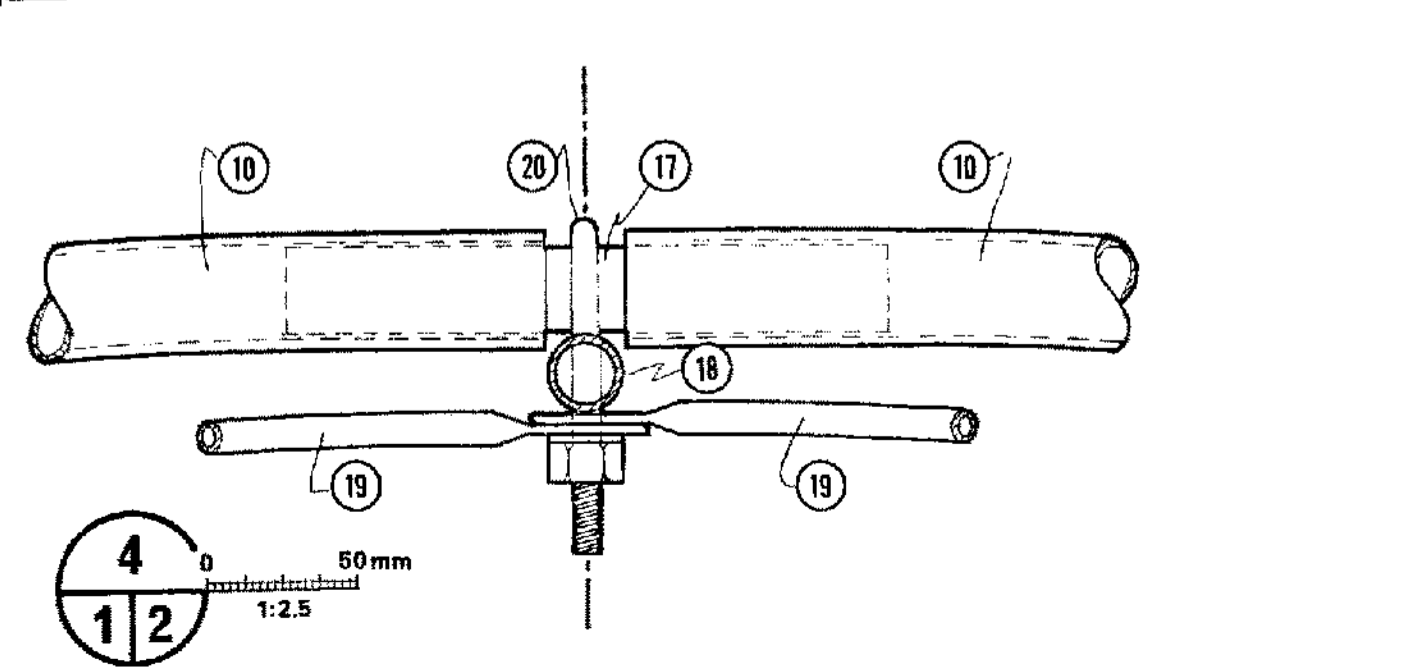
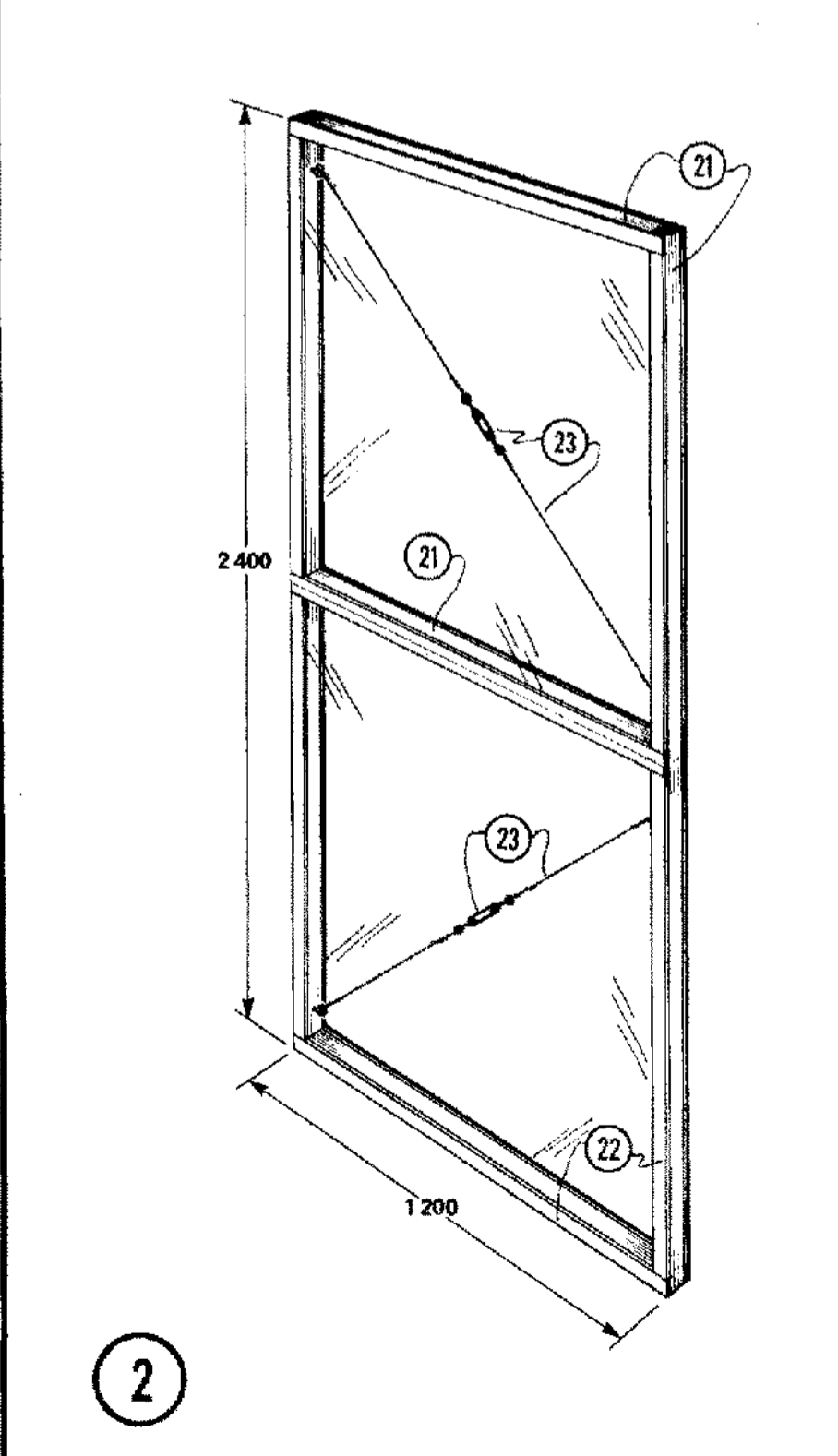
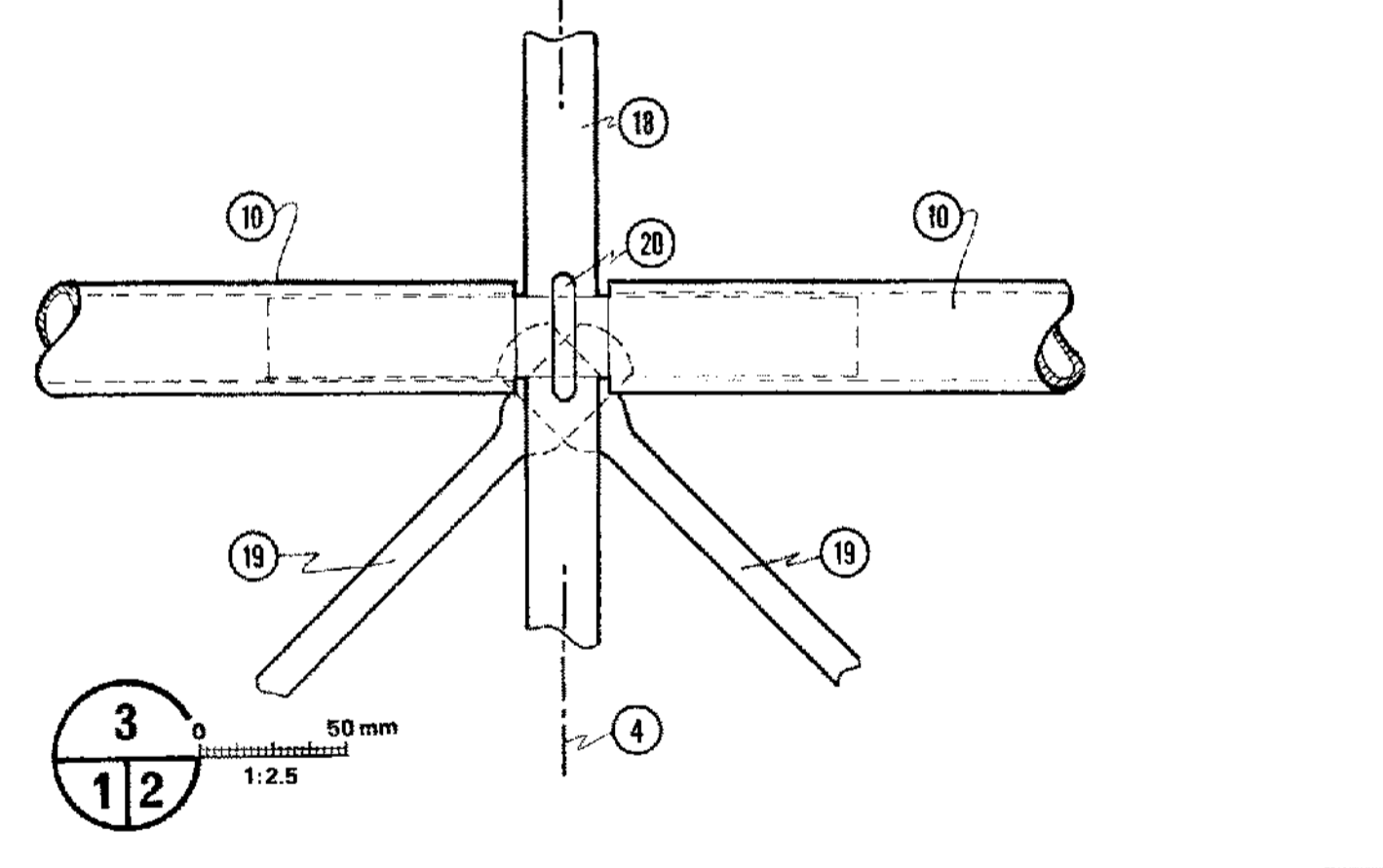
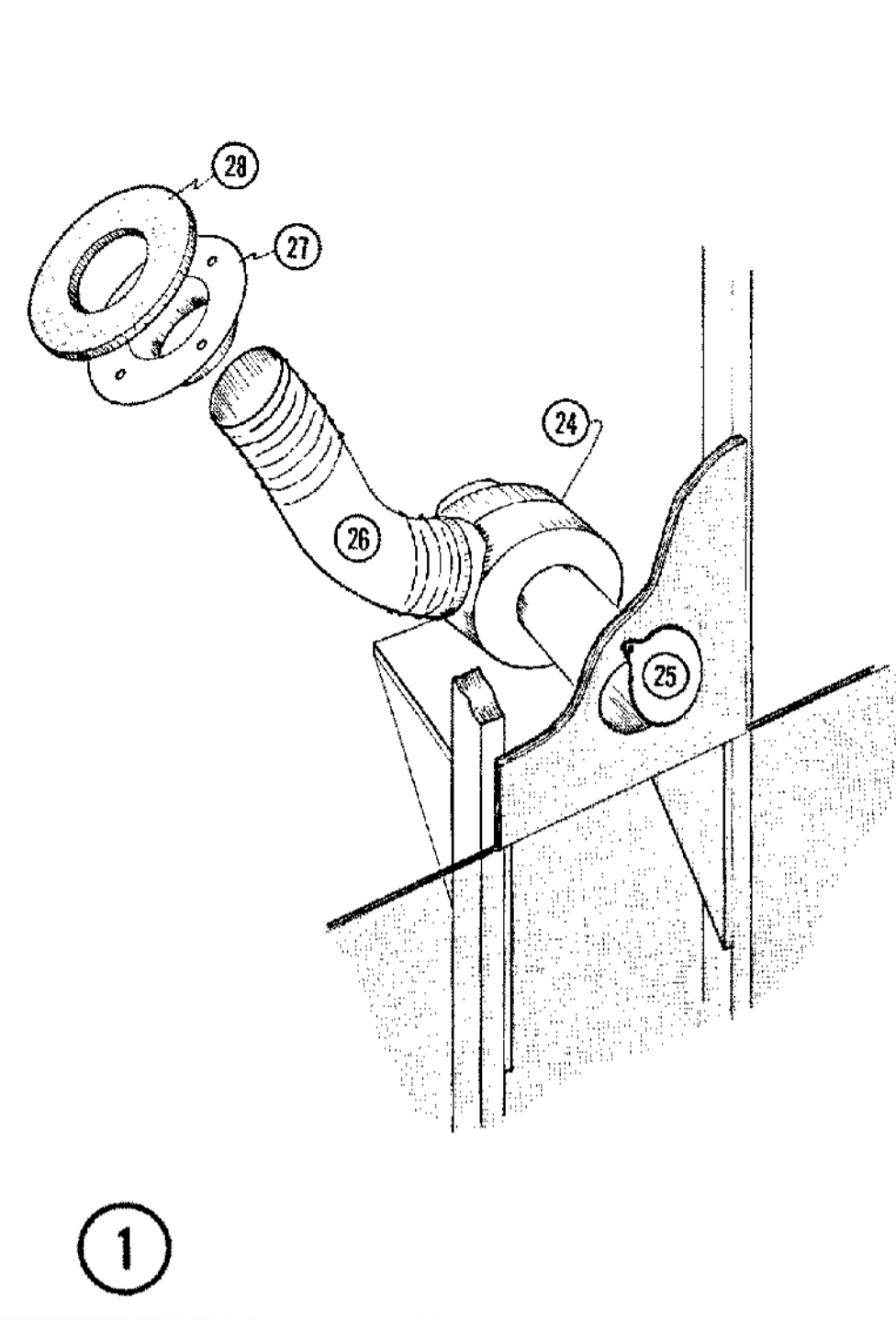
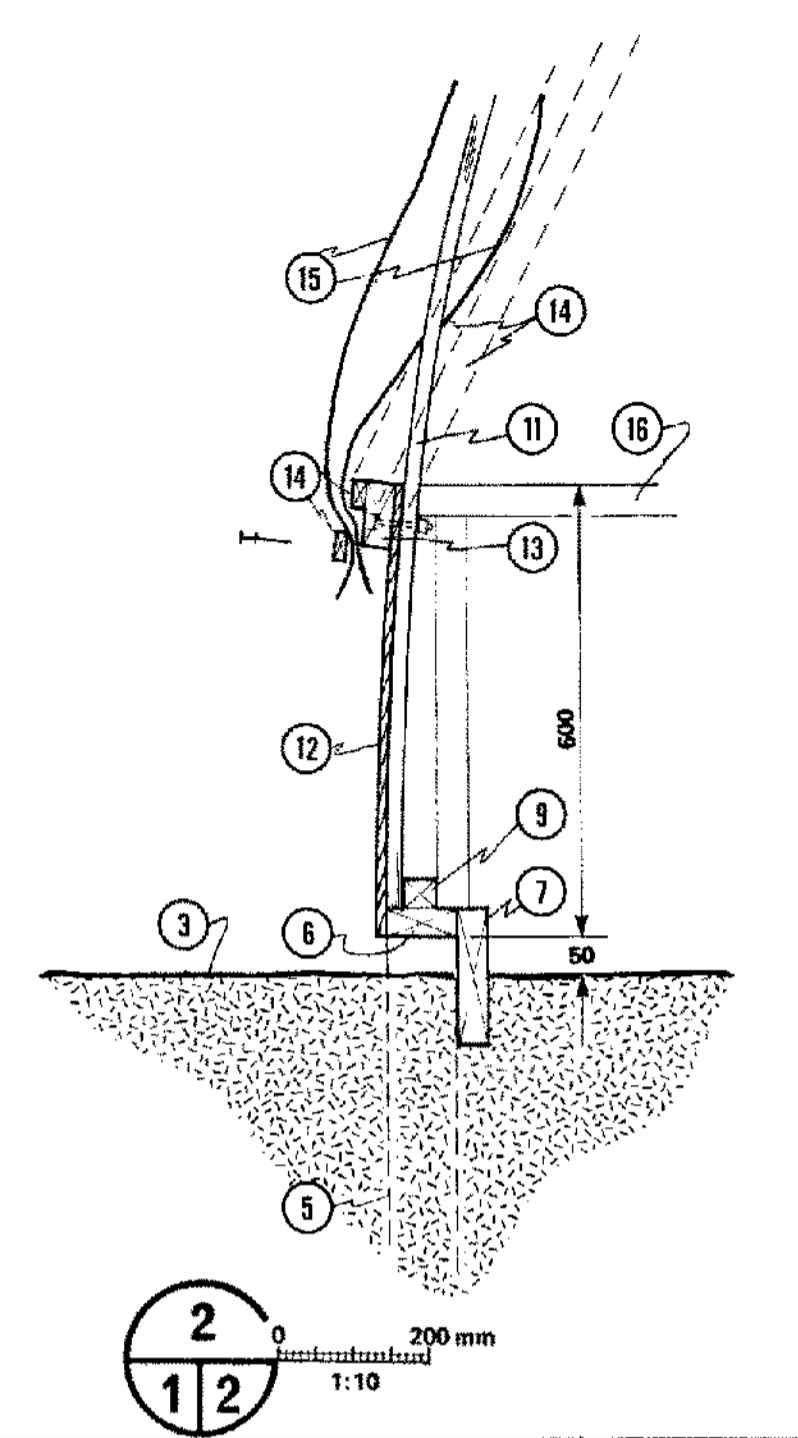
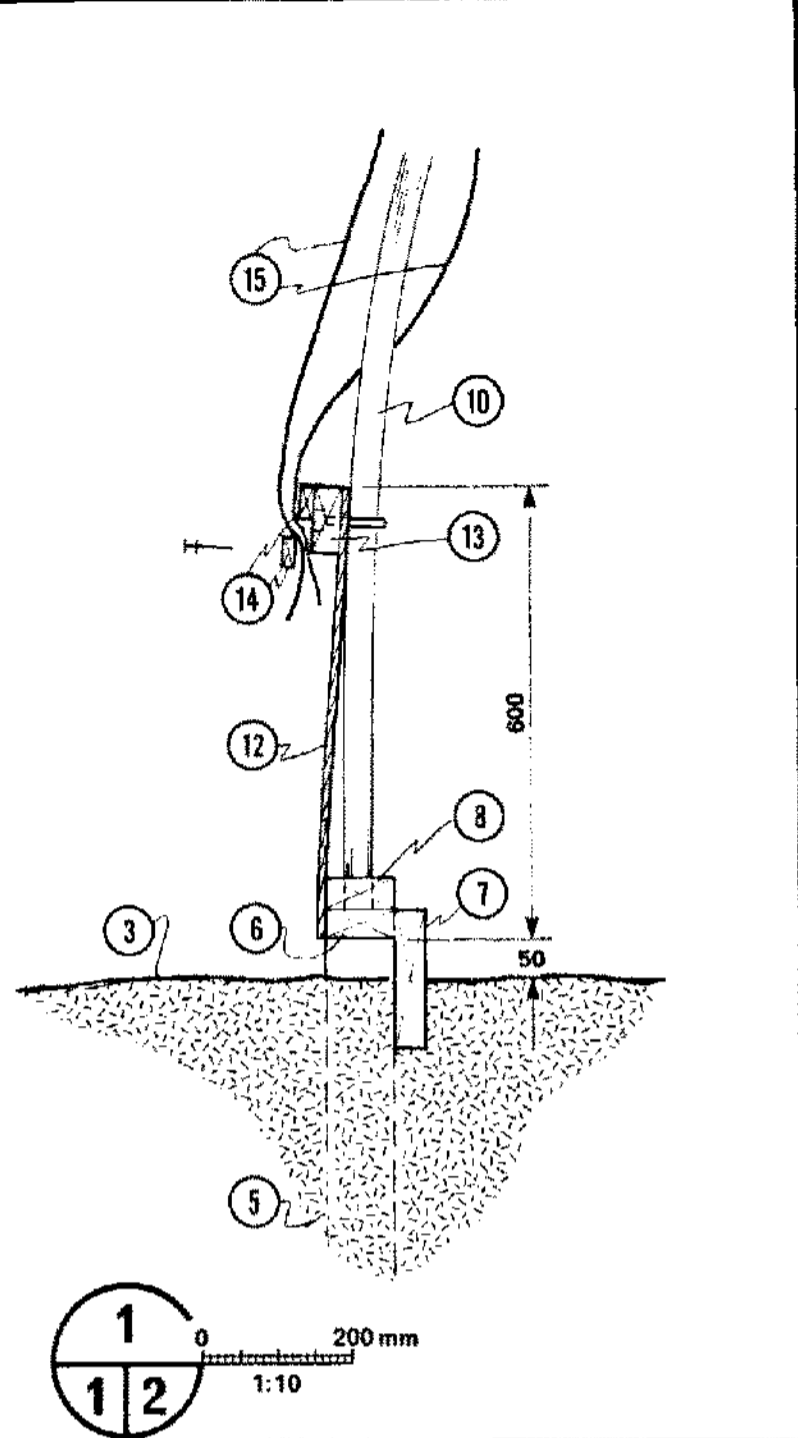
SYM	REVISIONS	CHECKED	DATE	APPROVED

**CANADA PLAN SERVICE**

TWO-LAYER POLYETHYLENE GREENHOUSE

DESIGNED J.A.R.	DATE 82-05	PLAN
DRAWN R.PELLA	REVISED	M-6720
TRACED	DETAIL NUMBER A	SHEET 1 OF 2
CHECKED J.E.T.	ORIGINATES ON SHEET B	
	DRAWN ON SHEET C	

ALL DIMENSIONS ARE IN MILLIMETRES (mm) UNLESS OTHERWISE SPECIFIED



- 1 blower detail
- 2 door detail
- 3 grade line
- 4 center line of greenhouse
- 5 89 x 89 mm cedar posts @ 1200 mm oc to below frost
- 6 38 x 89 mm plate
- 7 38 x 184 mm cedar plank, 102 mm galv. spiral nails @ 150 mm oc
- 8 38 x 89 mm scab with hole to accept (10)
- 9 38 x 38 mm scab @ endwall arch
- 10 1 1/2" (35 mm I.D.) galv. pipe arch, 2 pcs. @ 6096 mm long
- 11 19 x 89 mm header arch @ endwalls only
- 12 9.5 mm exterior sheathing grade plywood
- 13 38 x 89 mm nailing girt fastened to (10) with U-bolts (countersink nuts), fasten to (11) with M6 x 88 mm carriage bolts
- 14 19 x 38 mm battens to secure polyethylene, nail bottom batten with 64 mm double-headed nails
- 15 150 um polyethylene (ultra-violet inhibited); 7760 mm greenhouse span based on 12192 mm film width
- 16 38 x 89 mm nailing girt, fitted between studs
- 17 1" (33.4 mm O.D.) galv. pipe stub, 200 mm long
- 18 1" galv. pipe ridge, drill for (20)
- 19 3/4" galv. pipe bracing (see (10), sheet 1)
- 20 M10 J-bolt
- 21 38 x 38 mm frame
- 22 13 x 38 mm battens to secure polyethylene, both sides of frame
- 23 turnbuckle and wire cross-bracing attached with eyebolts
- 24 100 - 200 mm centrifugal blower; a 7800 x 28800 mm structure requires: 95 - 190 L/s air at up to 1.3 Pa static pressure and a 0.62 to 0.83 kW electric motor
- 25 air inlet cover; full open during initial inflation and during windy periods
- 26 polyethylene layflat tubing or collapsible clothes-dryer duct, diam. to suit blower outlet, gear clamp to (24) and (27)
- 27 collar to match blower outlet, solder to 0.80 mm galv. steel flange, diam. 150 mm more than that of blower outlet, secure with wood screws to (28)
- 28 18.5 mm plywood flange, diam. to match (27)

SYM	REVISIONS	CHECKED	DATE	APPROVED

**CANADA PLAN SERVICE**

WALL SECTIONS & DETAILS

DESIGNED J.A.R.	DATE 82-05	PLAN
DRAWN R. PELLA	REVISED	M-6720
TRACED	DETAIL NUMBER A	SHEET 2 OF 2
CHECKED J.E.T.	ORIGINATES ON SHEET B	
	DRAWN ON SHEET C	