



Grain pressure on the 'floor' part holds each panel in place. When panels are first set up, it is helpful to brace them temporarily with pieces of wood tacked to the wall and floor.

Figure 1 shows a perspective of the wall and corner sections. These units are framed with No. 2 S-P-F lumber and covered with Douglas fir plywood exterior sheathing with the face grain laid across the floor joists and wall studs.

Figure 2 shows the critical dimensions, the fastenings, the tie-down hardware and the end cap board 3 which makes the floor sleepers load-sharing.

Figure 3 gives the floor plans for a wall and a corner unit, showing the location of the studs, floor joists and corner wall blockings. Steel strap ties and steel joist hangers are hammer-bent to a tight fit and nailed in place wherever critical connections are required.

- 1 38 x 89 mm (2x4) floor joists at 400 mm (16 in.) oc
- 2 38 x 89 mm (2x4) studs at 400 mm (16 in.) oc, notched for 11
- 3 38 x 89 mm (2x4) end cap
- 4 38 x 89 mm (2x4) blocking (at corner wall only)
- 5 38 x 89 mm (2x4) base block
- 6 38 x 89 mm (2x4) plate
- 7 9.5 mm (3/8 in.) exterior sheathing Douglas fir plywood or material with equivalent strength in bending
- 8 0.9 x 50 x 300 mm (20 ga x 2 x 12 in.) galv steel strap
- 9 0.9 x 100 x 300 mm (20 ga. x 4 x 12 in.) galv steel strap
- 10 galv. steel joist hangers
- 11 3 x 38 x 38 mm (1/8 x 1 1/2 x 1 1/2 in.) steel angle, to prevent grain leakage
- 12 steel strap, 4.8 x 50 x 450 mm (3/16 x 2 x 18 in.), bend to suit at top and bottom
- 13 shackle made from 2 - 4.8 x 38 x 100 mm (3/16 x 1 1/2 x 4 in.) steel straps welded to M10 (3/8 in.) nut (tap end) and 14 (bottom end), drill through for M10 (3/8 in.) machine bolt
- 14 9.5 (3/8 in.) steel rod, thread top end for 13; OR turnbuckle with closed eyes, steel cable, clamps and thimbles rated safe to 5 kN (1100 lb),
- 15 4.5 x 75 mm concrete nails, number indicated thus 3
- 16 2 - M12 x 100 mm (1/2 x 4 in.) machine bolts, nuts and washers
- 17 OPTIONAL unloading port; cut plywood opening smaller than space between studs to stop the removable louver boards

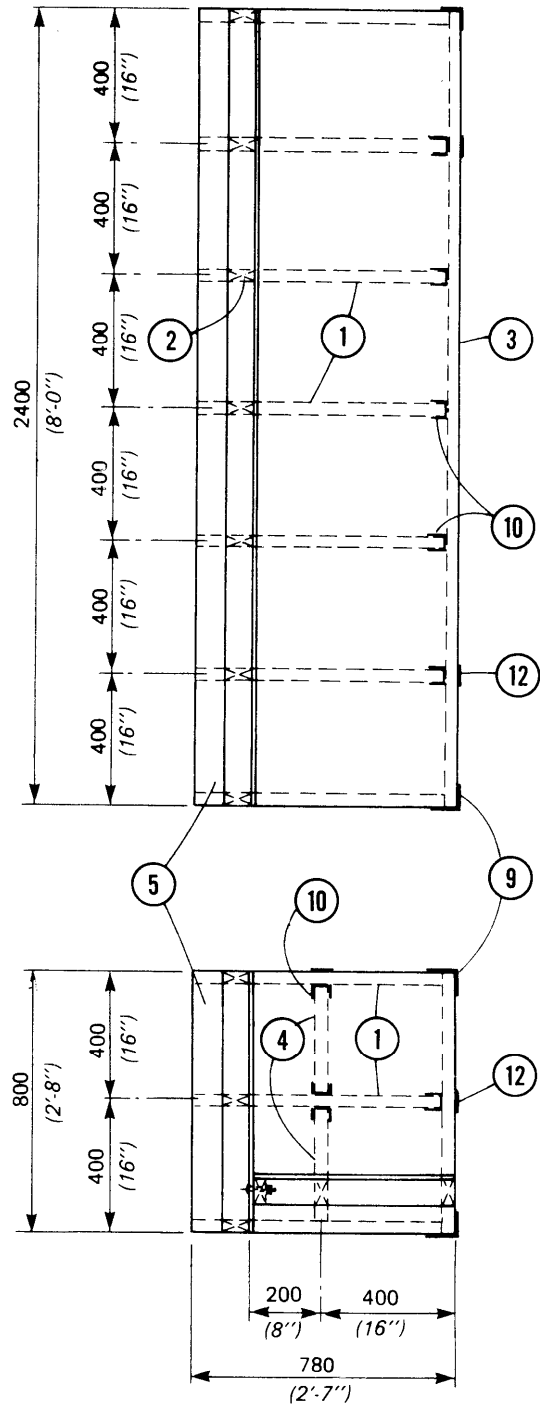


Figure 3 Floor plan of wall and corner units