

- 1 2-bin arrangement, bins 2'-0" square
- 2 4-bin arrangement, bins 2'-0" square
- 3 single bin, 4'-0" square
- 4 2 or 4-bin arrangement, bins 4'-0" square
- 5 combination arrangement, bins 2'-0" and 4'-0" square
- 6 short bins
- 7 tall bins

SPECIFICATIONS

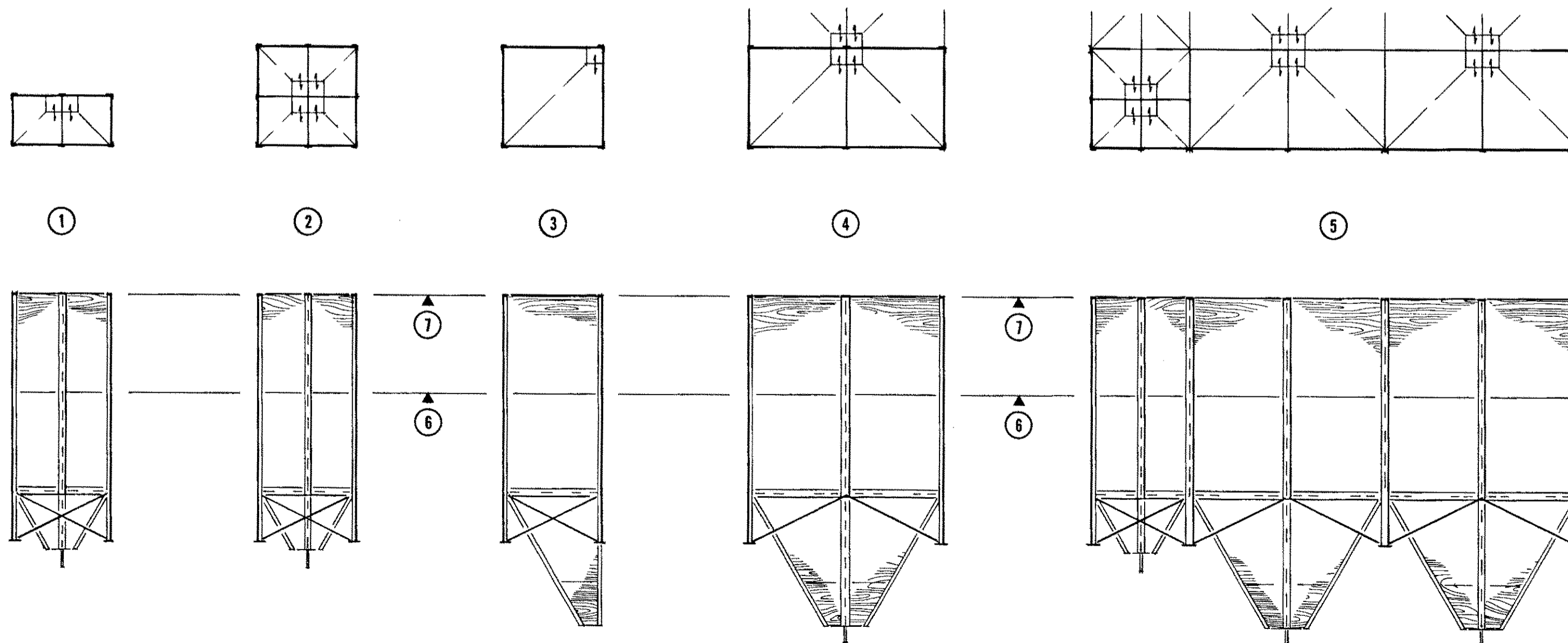
This plan is designed to meet the requirements of the Canadian Farm Building Code.

The plan user must ensure that the design criteria indicated herein will meet all local design conditions, building regulations and special requirements. Consult an engineer if you are not familiar with the details required.

Bins designed for loads and pressures corresponding to dry wheat, bulk density $\rho = 840 \text{ kg/m}^3$, friction coefficient of grain on plywood $\mu = 0.4$, horizontal/vertical grain pressure ratio $k = 0.4$.

ONE SET OF DRAWINGS AND LEAFLETS SHOULD INCLUDE:

CPS no.	sheet no.	Title
7824	-1-	Multiple feed bins
7824	-2-	Plans & sections
7824	-3-	Details
AND LEAFLET		
7824		Multiple feed bins



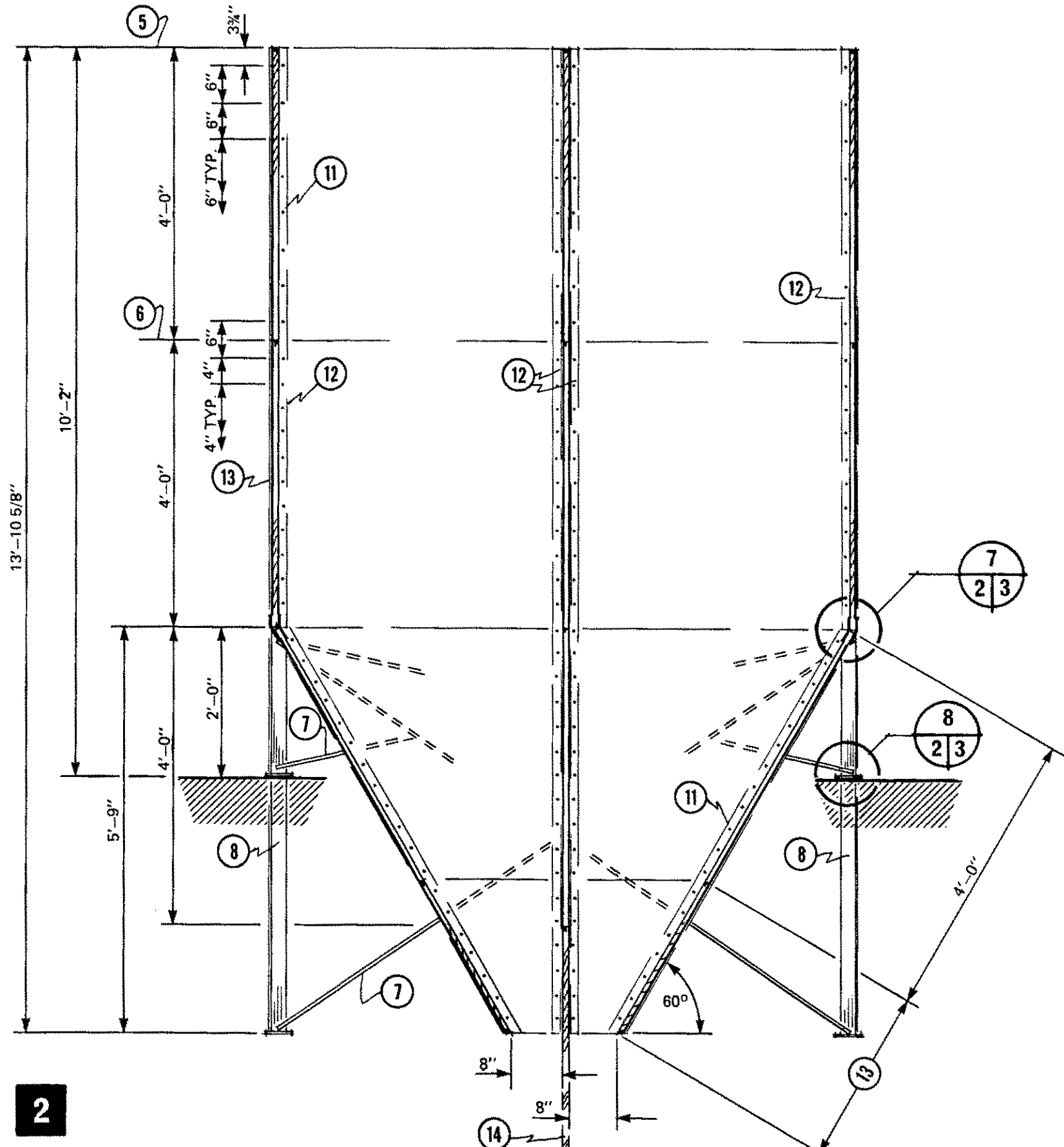
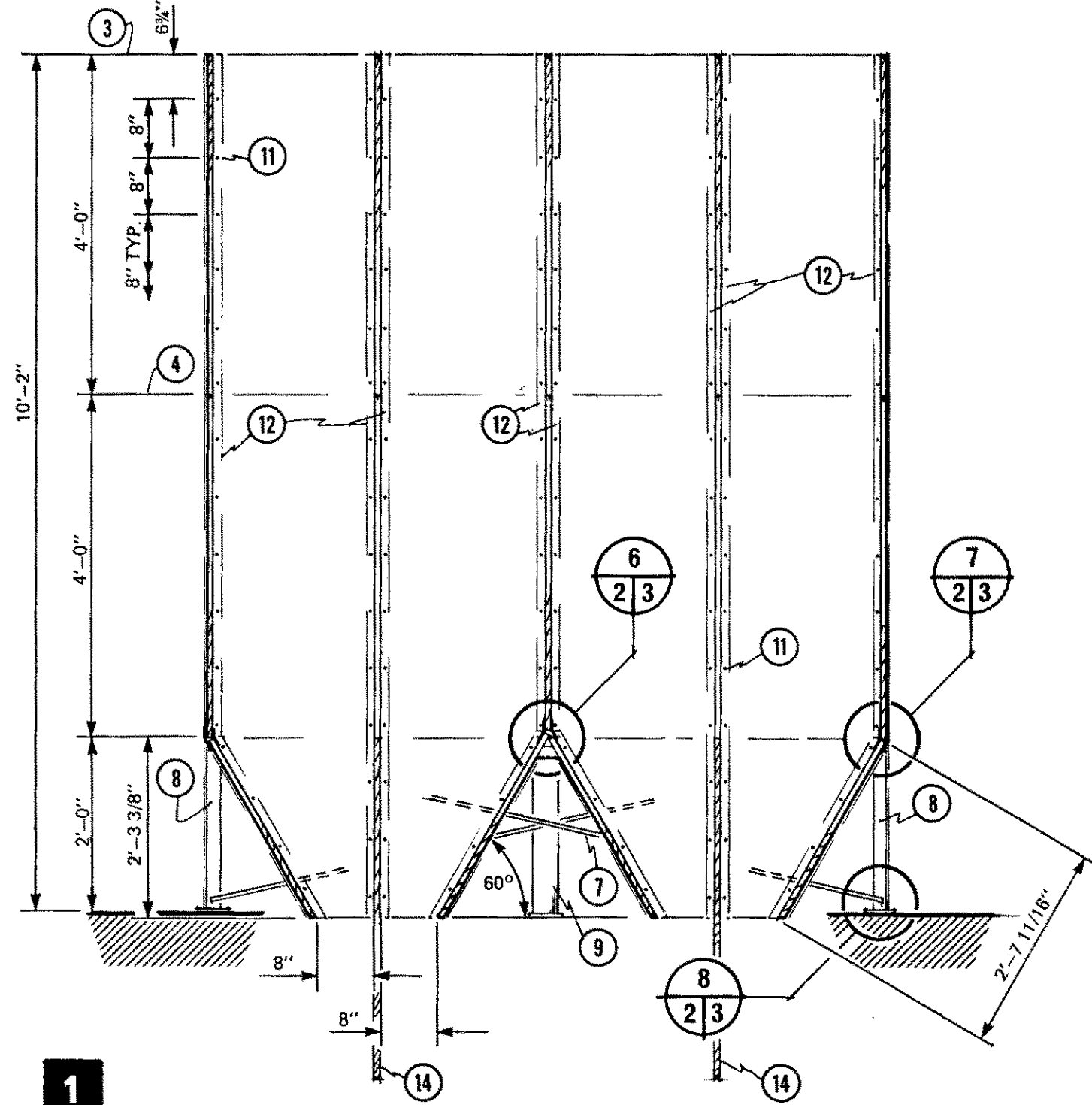
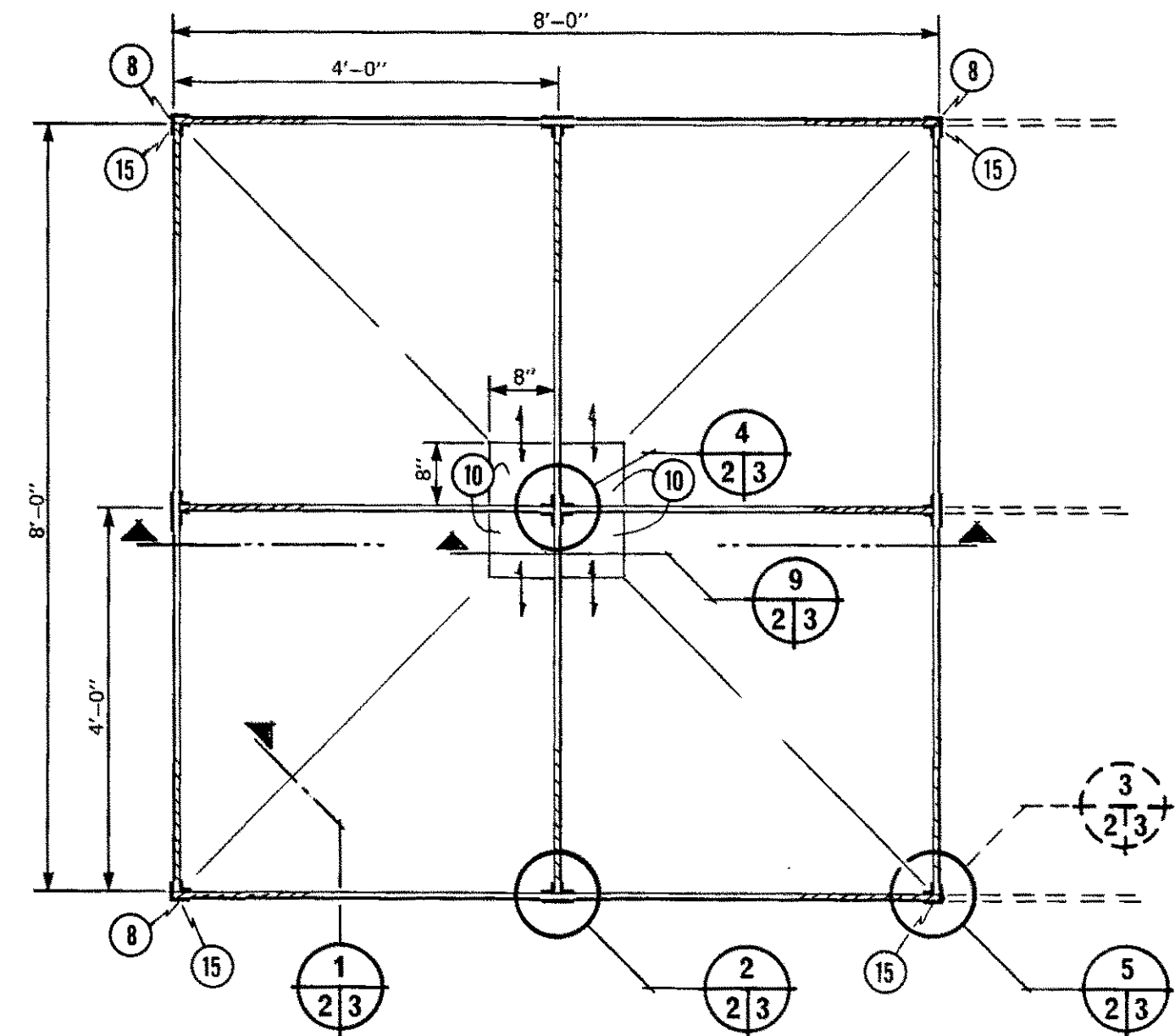
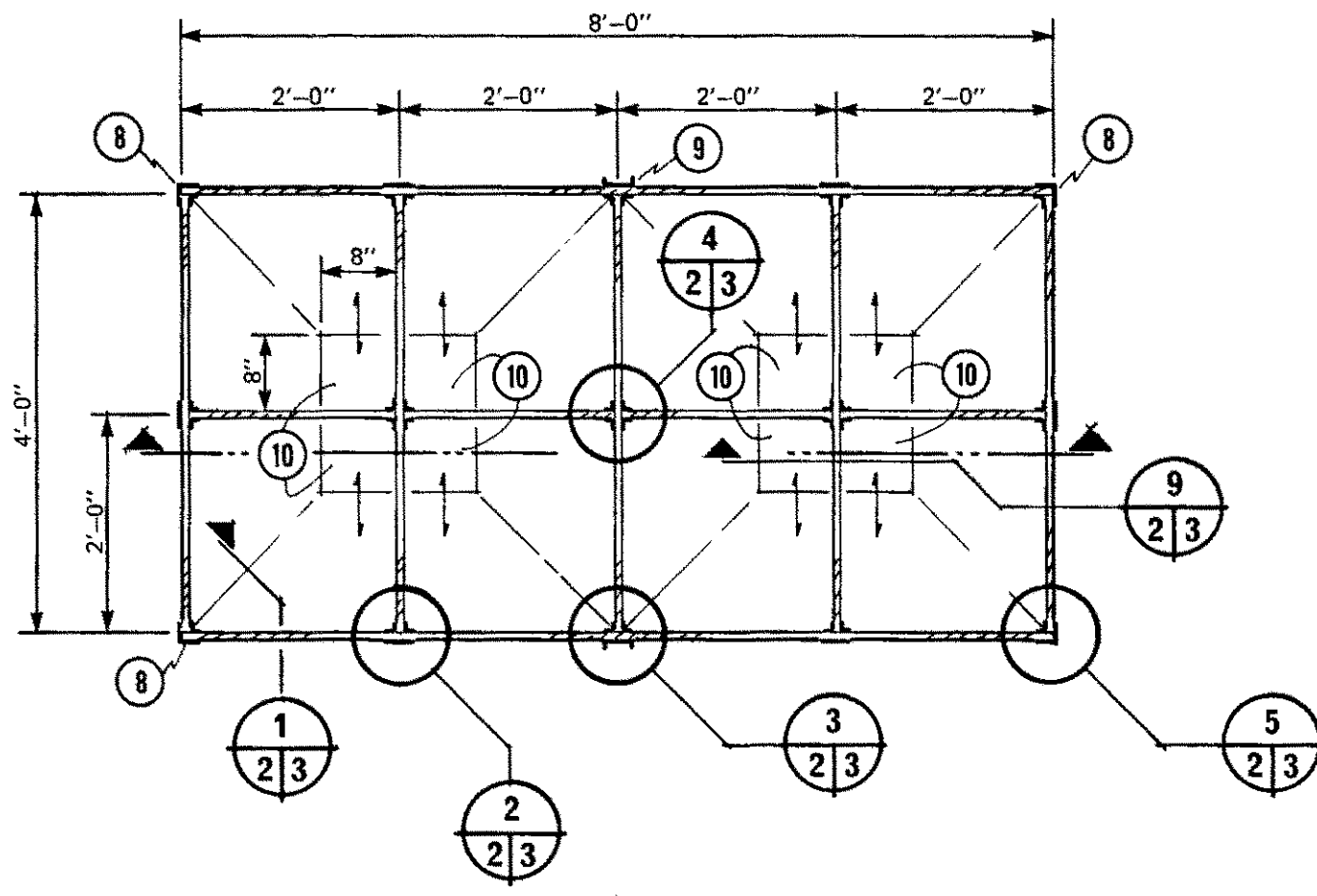
SYM	REVISIONS	CHECKED	DATE	APPROVED

CANADA PLAN SERVICE

MULTIPLE FEED BINS

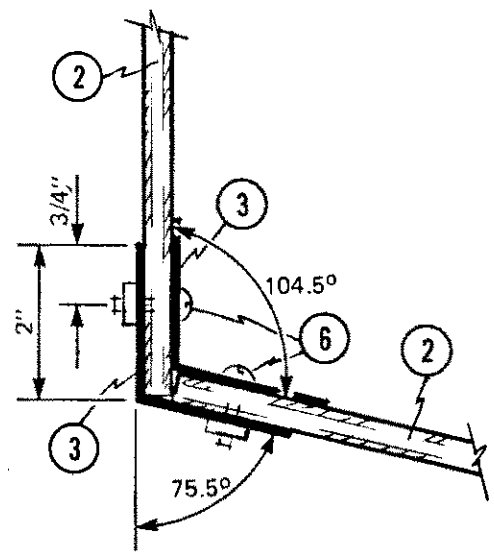
(not to scale)

DESIGNED <i>J.E.T.</i>	DATE 87-05	PLAN
DRAWN <i>R. PELLA</i>	REVISED	
TRACED	DETAIL NUMBER A	7824
CHECKED <i>H.A.J.</i>	ORIGINATES ON SHEET B DRAWN ON SHEET C	
		SHEET 1 OF

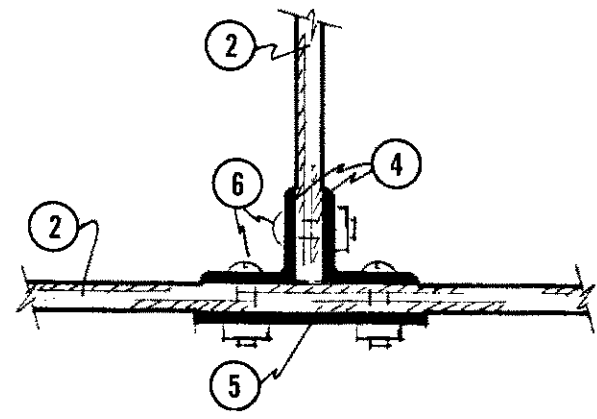


- 1 plan & section, 8-bin arrangement, 2'-0" sq. bins
- 2 plan & section, 4-bin arrangement, 4'-0" sq. bins
- 3 tall bin; max. height using 1/2" 4-ply tongue & groove spruce or D. fir sheathing plywood, face grain horizontal
- 4 short bin; max. height using 3/8" 3-ply spruce or D. fir sheathing plywood
- 5 tall bin; max. height using 3/4" 5-ply tongue & groove D. fir sheathing plywood, face grain horizontal
- 6 short bin; max. height using 5/8" 5-ply tongue & groove spruce or D. fir sheathing plywood
- 7 3/4" diam. steel rod diagonal bracing, 2 each corner, brace all 4 sides of bin, weld to legs
- 8 steel angle legs, see sheet 3 for details
- 9 steel channel leg, see sht. 3 for details
- 10 slide valve, pulley or lever controlled, see sheet 3 for details
- 11 round-head stove bolts @ spacings shown; see also 15 and sheet 3
- 12 steel angle corner reinforcement (see sht. 3 for details)
- 13 panel length: 2'-6 1/2" with 5/8" plywood
2'-6 1/8" with 3/4" plywood
- 14 extend center partition to support slide valves (see sheet 3)
- 15 bolt spacing at outside corners is double that shown at inside and T-joints

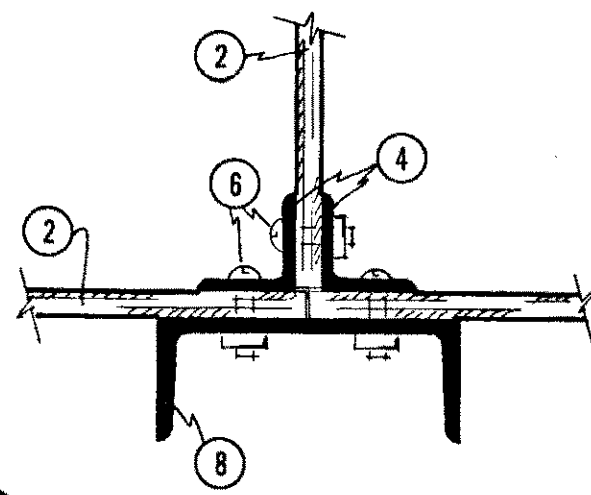
SYM	REVISIONS	CHECKED	DATE	APPROVED
PLANS & SECTIONS				(not to scale)
DESIGNED <i>J.E.T.</i>	DATE 87-05	PLAN		
DRAWN <i>R. PELLA</i>	REVISED	7824		
TRACED	ORIGINATES ON SHEET A	SHEET 2 OF		
CHECKED <i>H.A.J.</i>	DETAIL NUMBER A			
	DRAWN ON SHEET B			



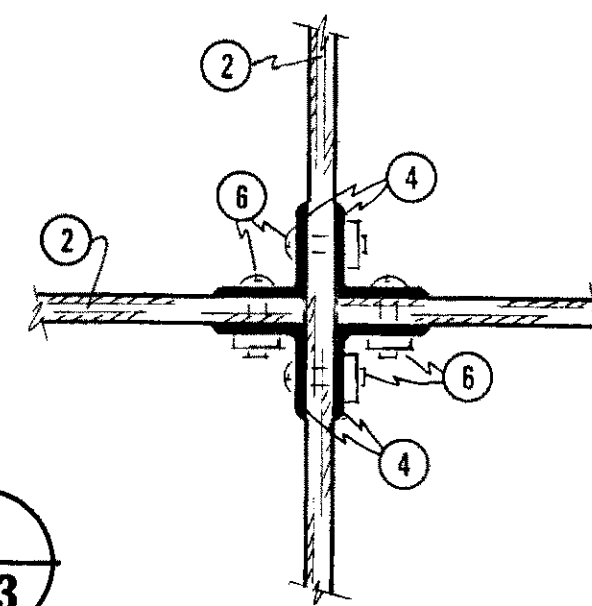
1
2 3



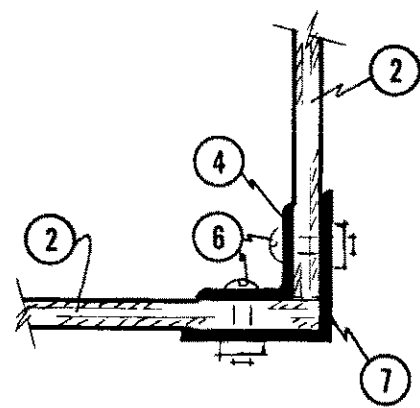
2
2 3



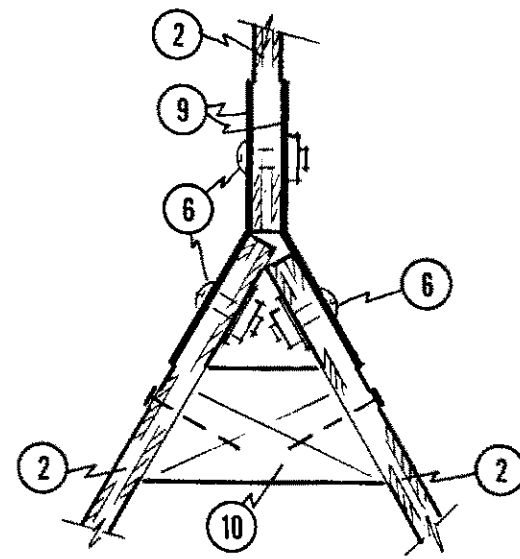
3
2 3



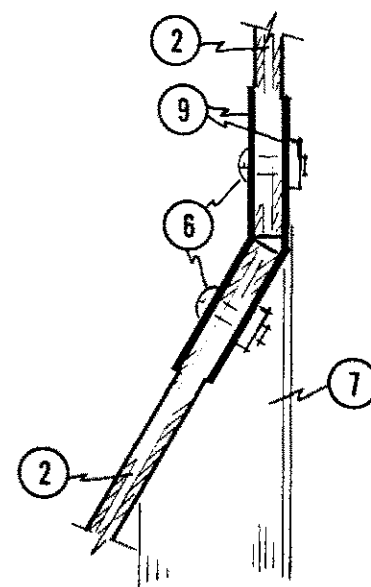
4
2 3



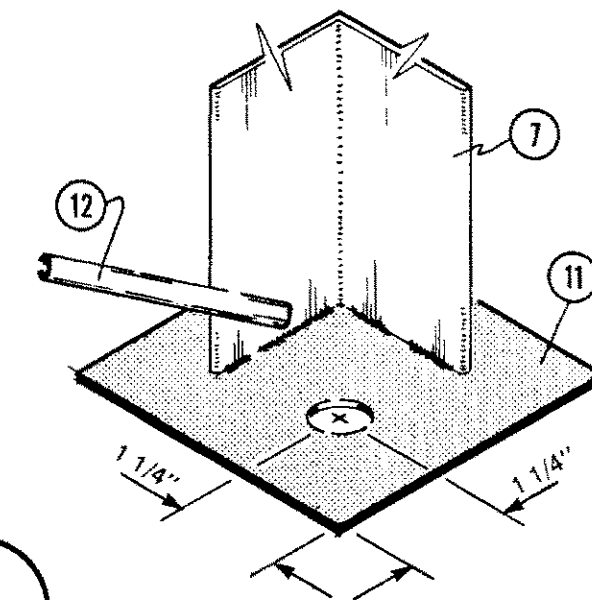
5
2 3



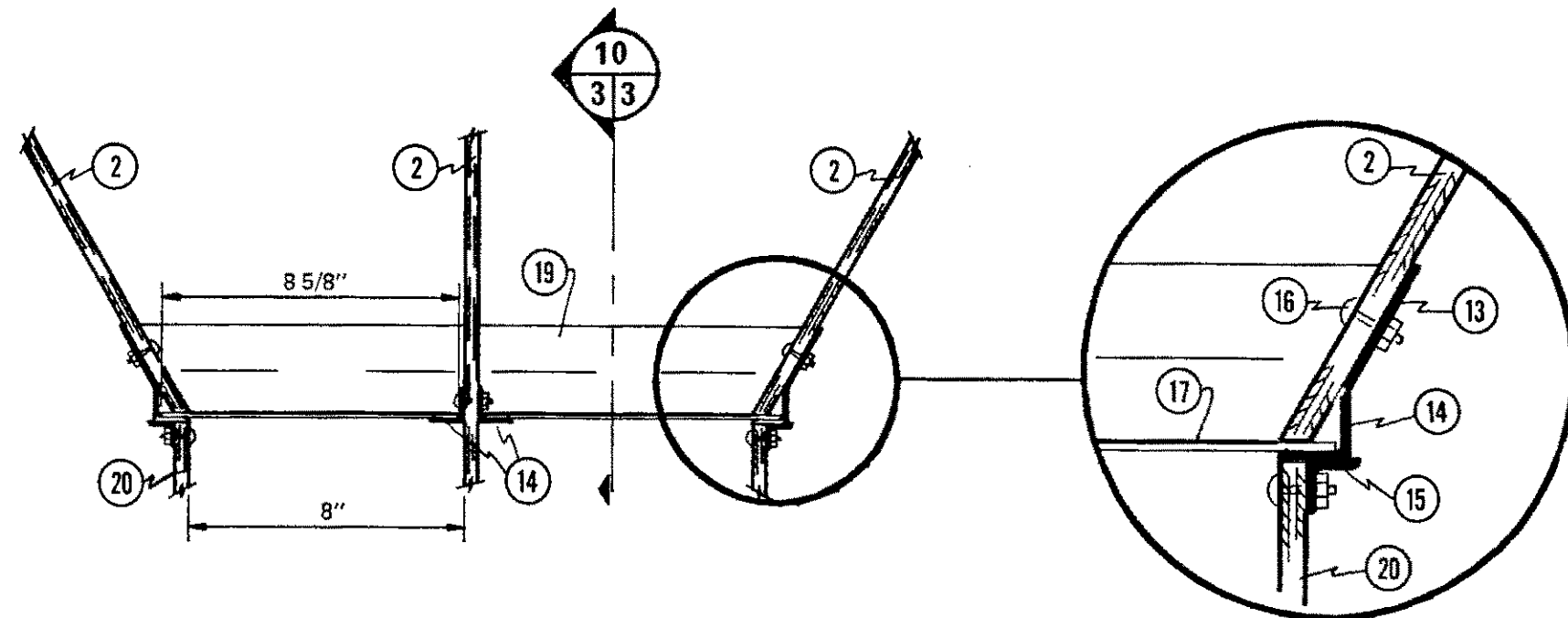
6
2 3



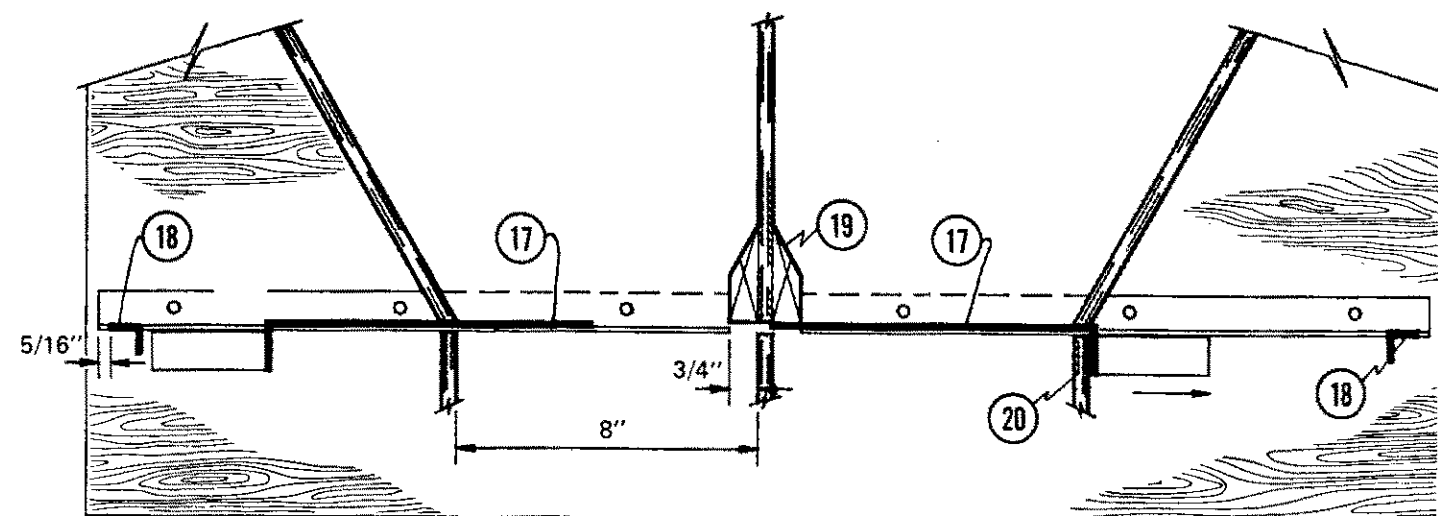
7
2 3



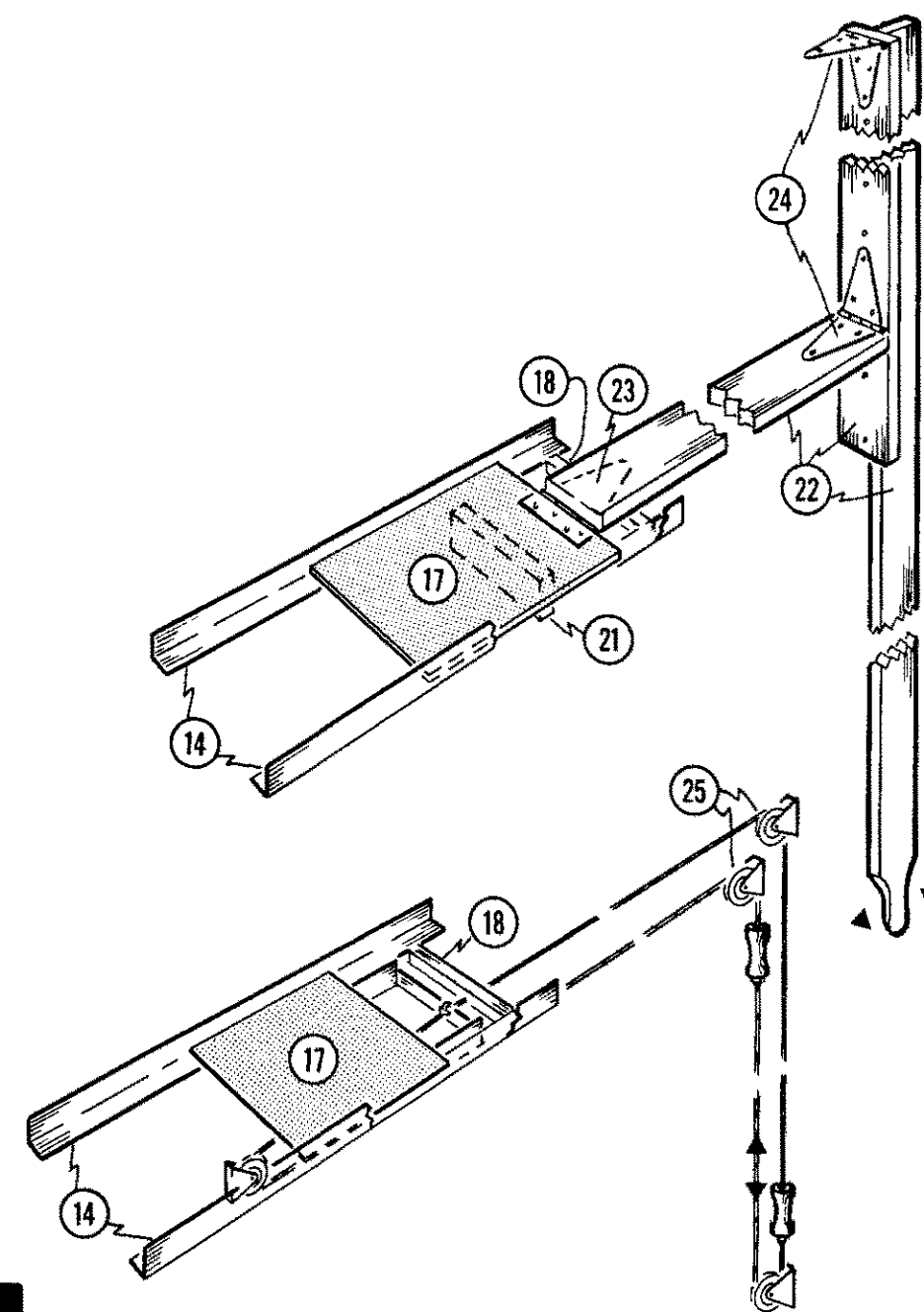
8
2 3



9
2 3



10
3 3



1

- 1 schematics of optional types of slide valve controls
- 2 tongue & groove sheathing plywood
- 3 galv. steel angle bent from 18 ga. x 4" strip

	2'-0" sq. bins	4'-0" sq. bins
4 1/8" steel angle, drill for bolts	1 1/2" x 1 1/2"	1 3/4" x 1 3/4"
5 1/8" steel strap, drill for bolts	1/8" x 3"	1/8" x 4"
6 round-head stove bolts	1/2" x 1"	1/2" x 1 1/2"
7 3/16" steel angle, drill for bolts	2" x 2"	2 1/2" x 2 1/2"
- 4 1/8" steel angle, drill for bolts
- 5 1/8" steel strap, drill for bolts
- 6 round-head stove bolts
- 7 3/16" steel angle, drill for bolts
- 8 C4 x 7.25 steel channel, drill for bolts
- 9 18 ga. x 4" galv. steel angle; drill for bolts
- 10 1 1/2" wedge board, cut @ 60°; 2" galv. spiral nails @ 4" o.c.
- 11 1/2" x 4" x 4" steel footpad, drill for 3/8" diam. anchor bolts, weld to leg
- 12 3/4" diam. steel rod cross-bracing welded to legs and at cross-over points
- 13 1/8" x 2" x 1'-8" steel strap, drill for bolts & weld to (14)
- 14 1" x 1" x 1/8" x 1'-4 5/16" steel angle
- 15 3/4" x 3/4" x 1/8" x 1'-5 3/16" steel angle, weld to (14)
- 16 1/2" round head stove bolts, @ 6" o.c.
- 17 11 ga. galv. sheet metal slide valve
- 18 1" x 1" x 1/8" steel angle, valve stop
- 19 1 x 3 cut @ 30°, nail with 2" galv. spiral nails @ 1'-0" o.c.
- 20 3/8" plywood drop chute, or sheet metal square-to-round transition piece, to match drop pipe
- 21 2 x 3 valve stop
- 22 2 x 4 lever and connecting rod
- 23 3 1/2" T-hinge, on top of (17) & on underside of (22)
- 24 3 1/2" strap hinge
- 25 pulley and cable controls

SYM	REVISIONS	CHECKED	DATE	APPROVED
CANADA PLAN SERVICE		DETAILS		
(not to scale)				
DESIGNED <i>J.E.T.</i>	DATE 87-05	PLAN		
DRAWN <i>R. PELLA</i>	REVISED	7824		
TRACED	DETAIL NUMBER <i>A</i>	SHEET 3 OF		
CHECKED <i>H.A.J.</i>	ORIGINATES ON SHEET <i>B</i> DRAWN ON SHEET <i>C</i>			